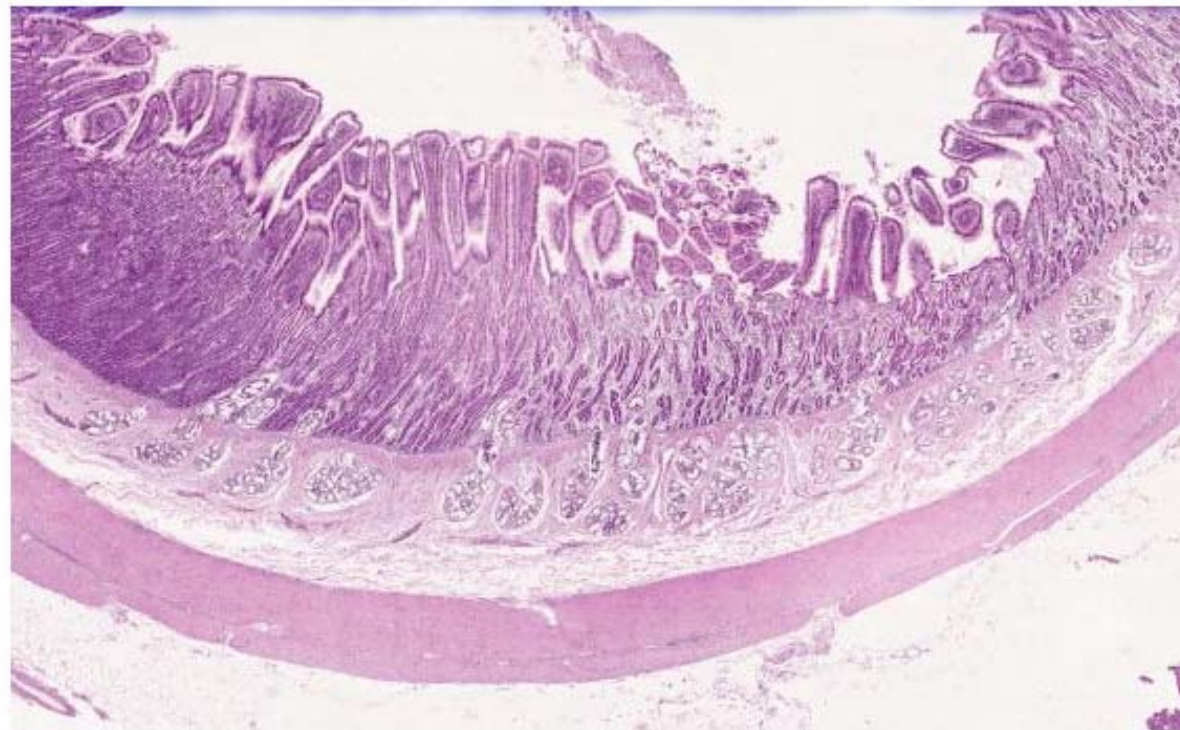


# A215 Lab - Scope Day 5

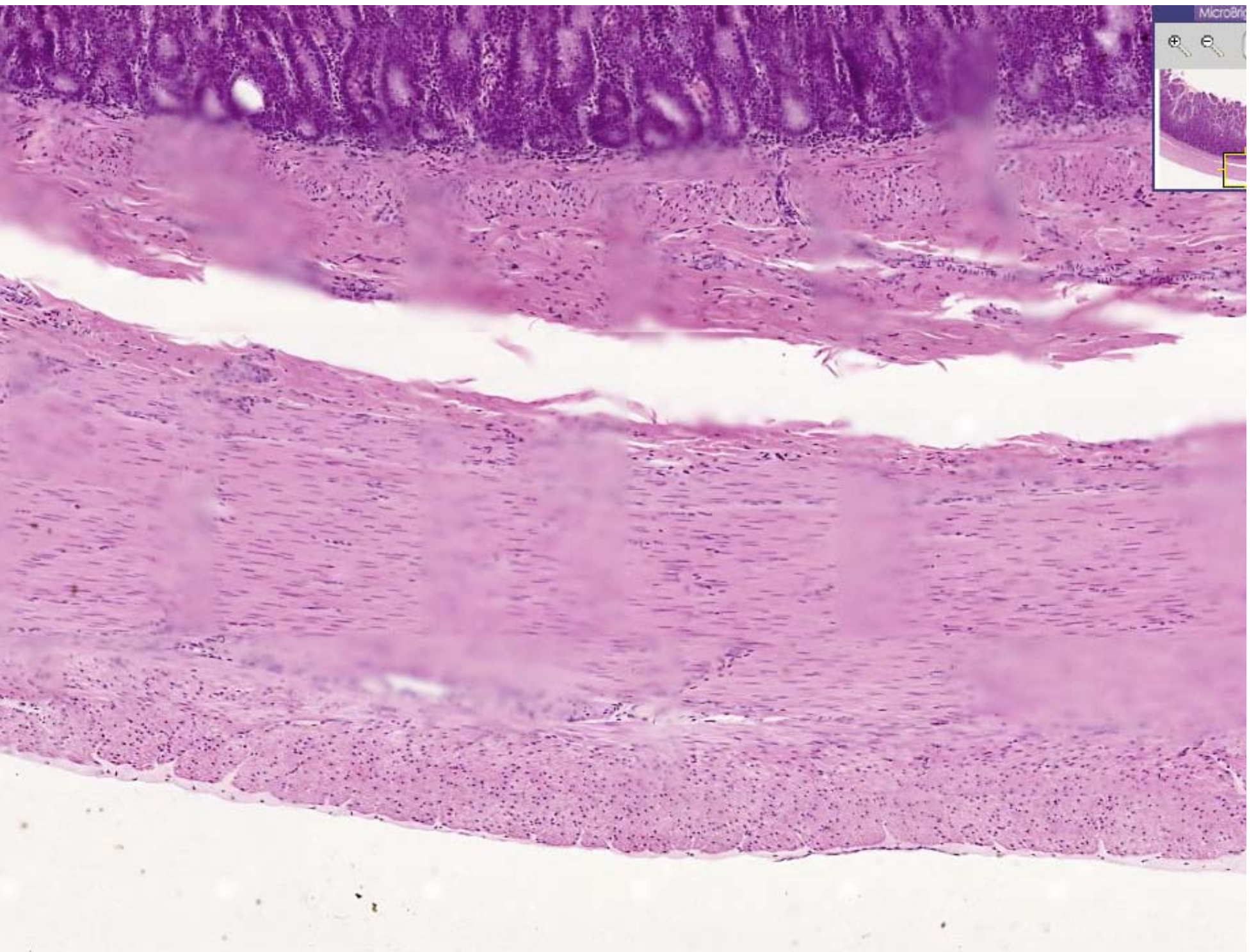
Muscle Histology &  
Head/Neck/Torso muscles

# Types of Muscle

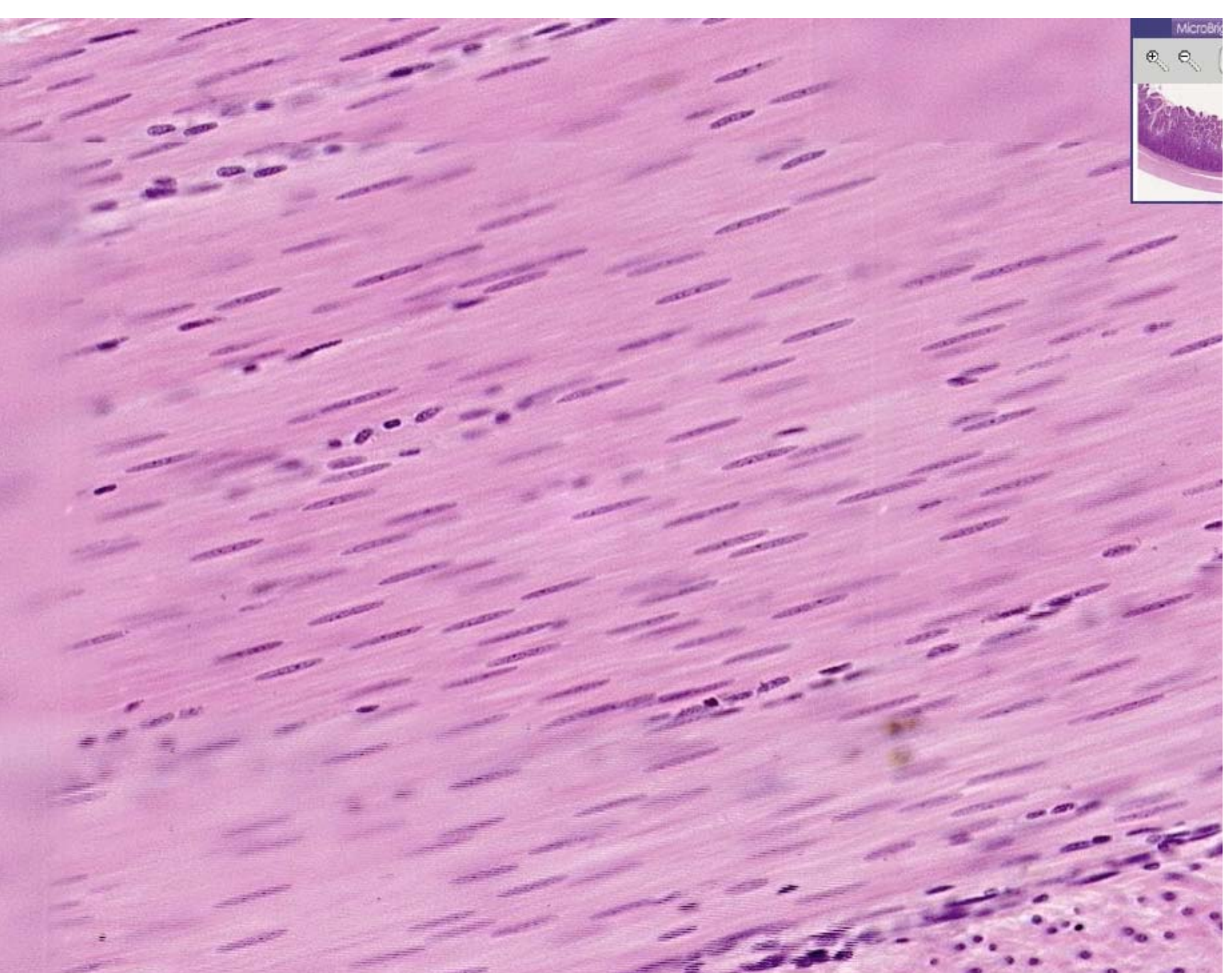
	Nuclei	Striations?	Branchi
Smooth Muscle	spindle	No	No
Skeletal Muscle	flat & peripheral	Yes	No
Cardiac Muscle	round & central	Yes (not very visible)	Yes



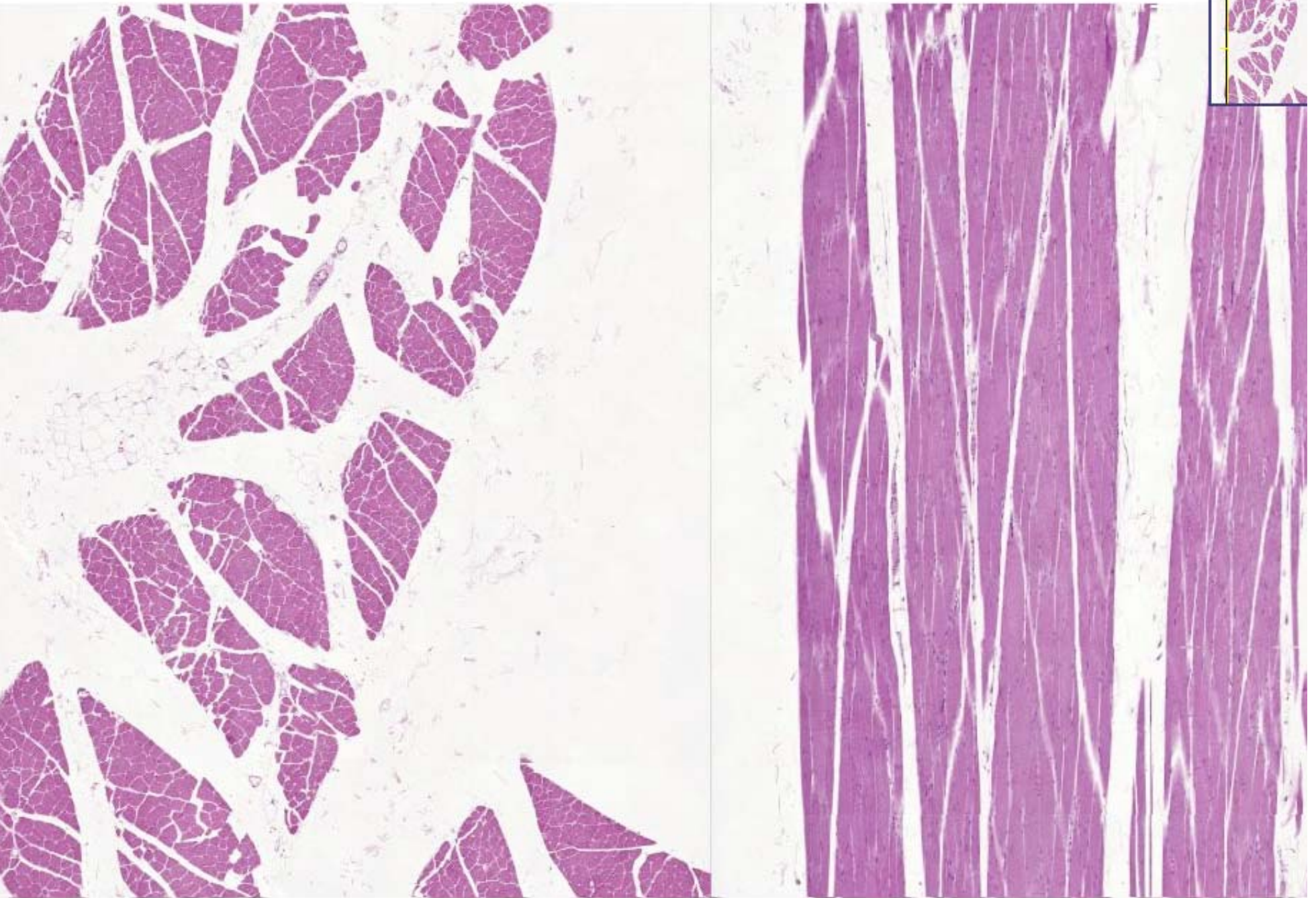








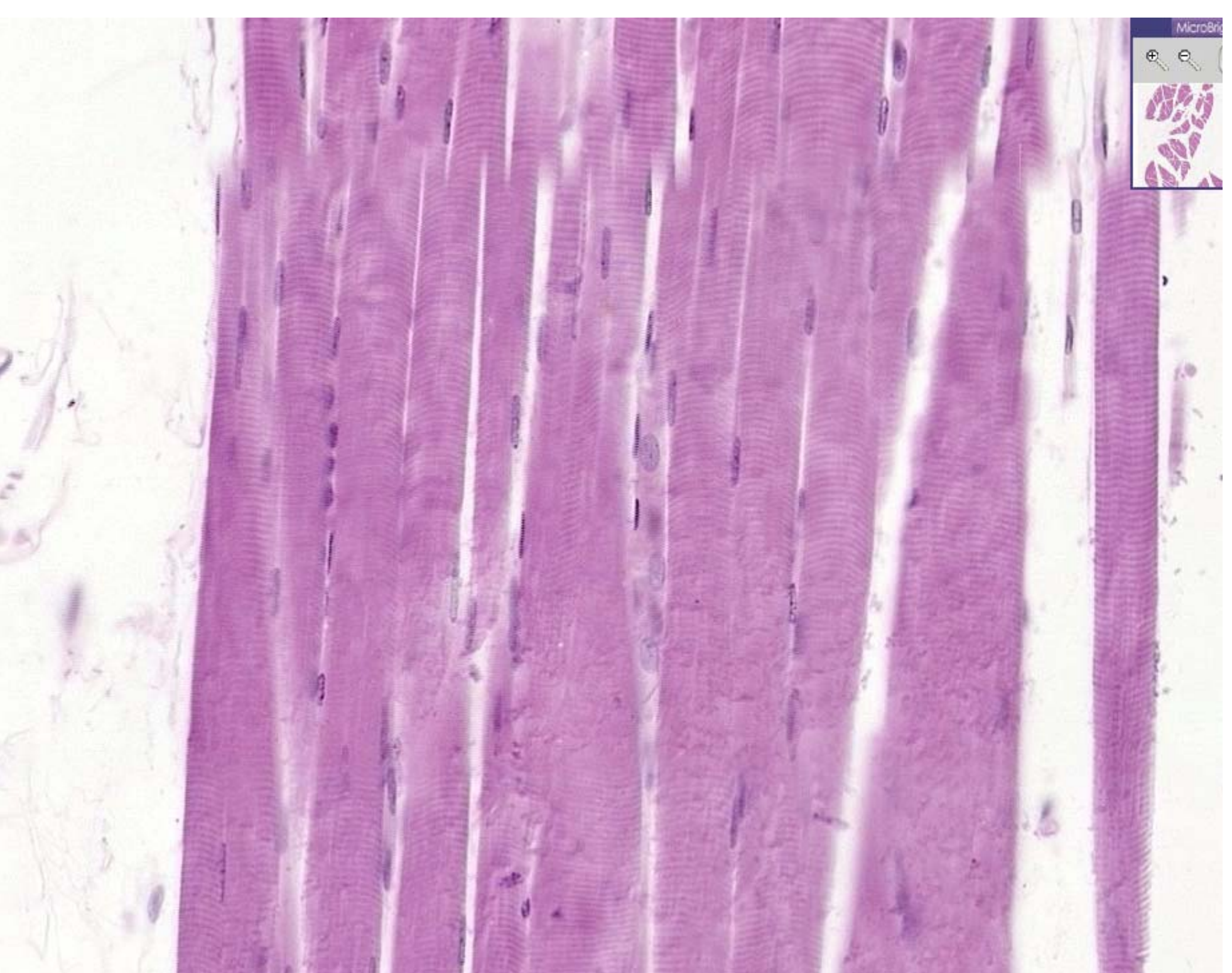




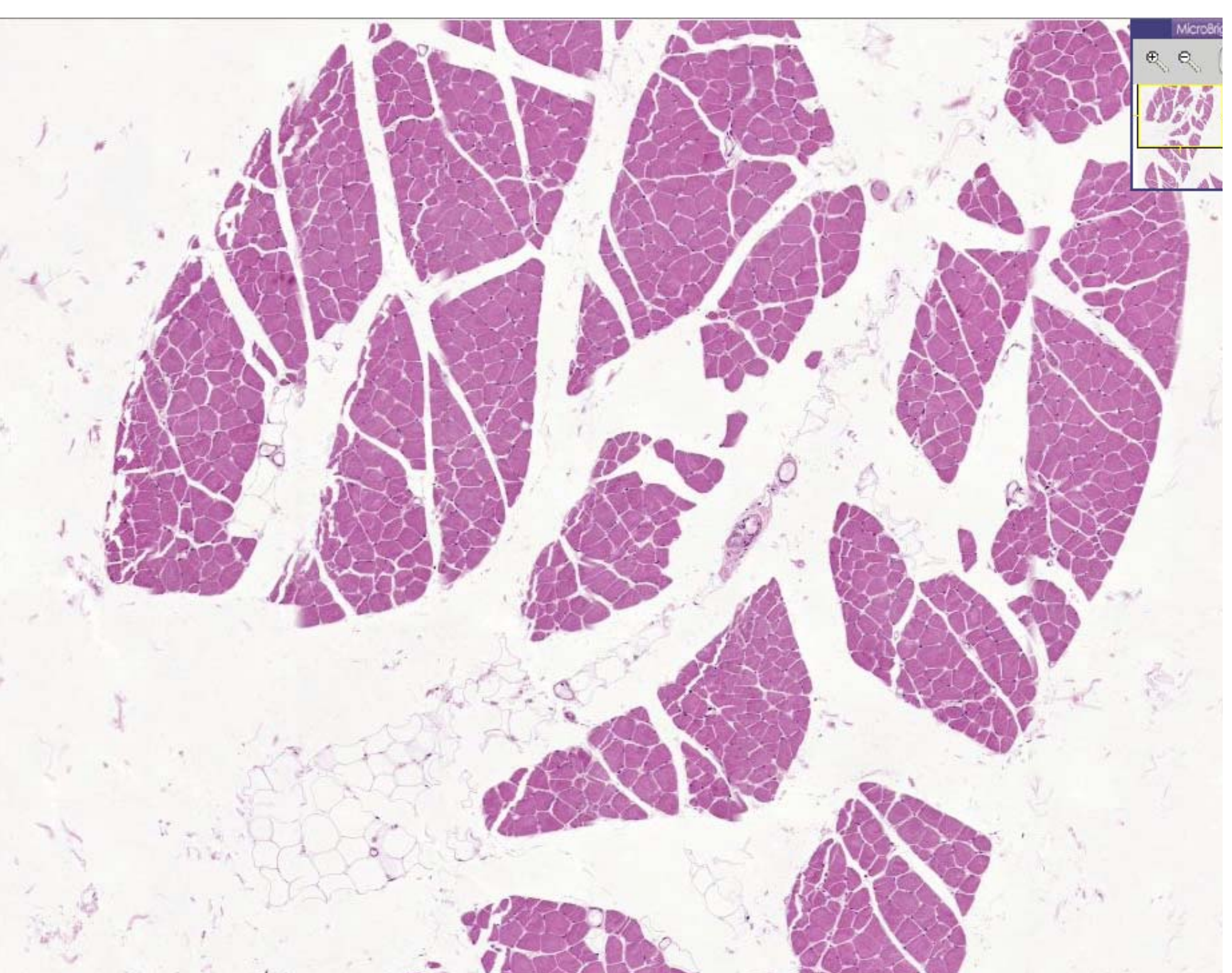




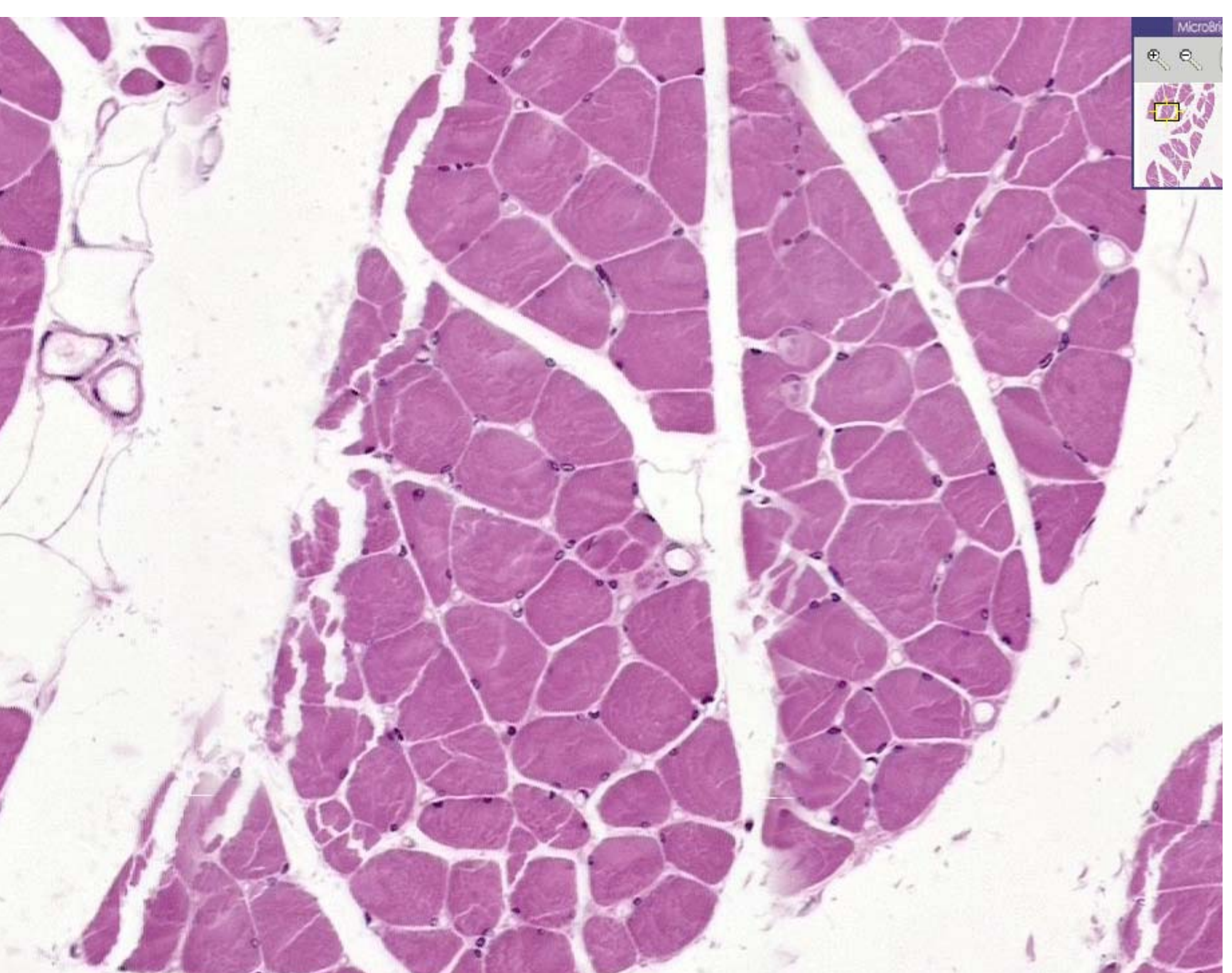




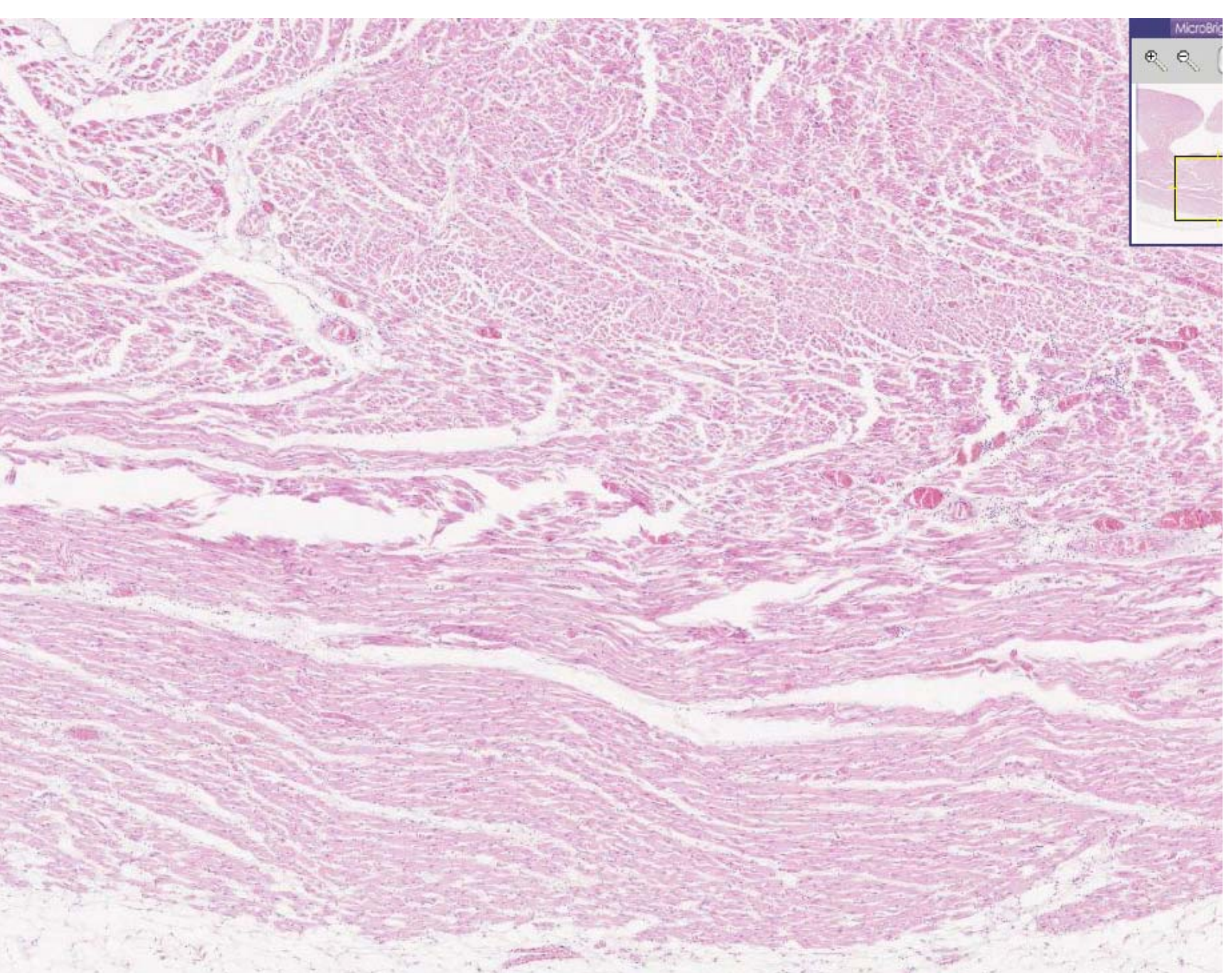




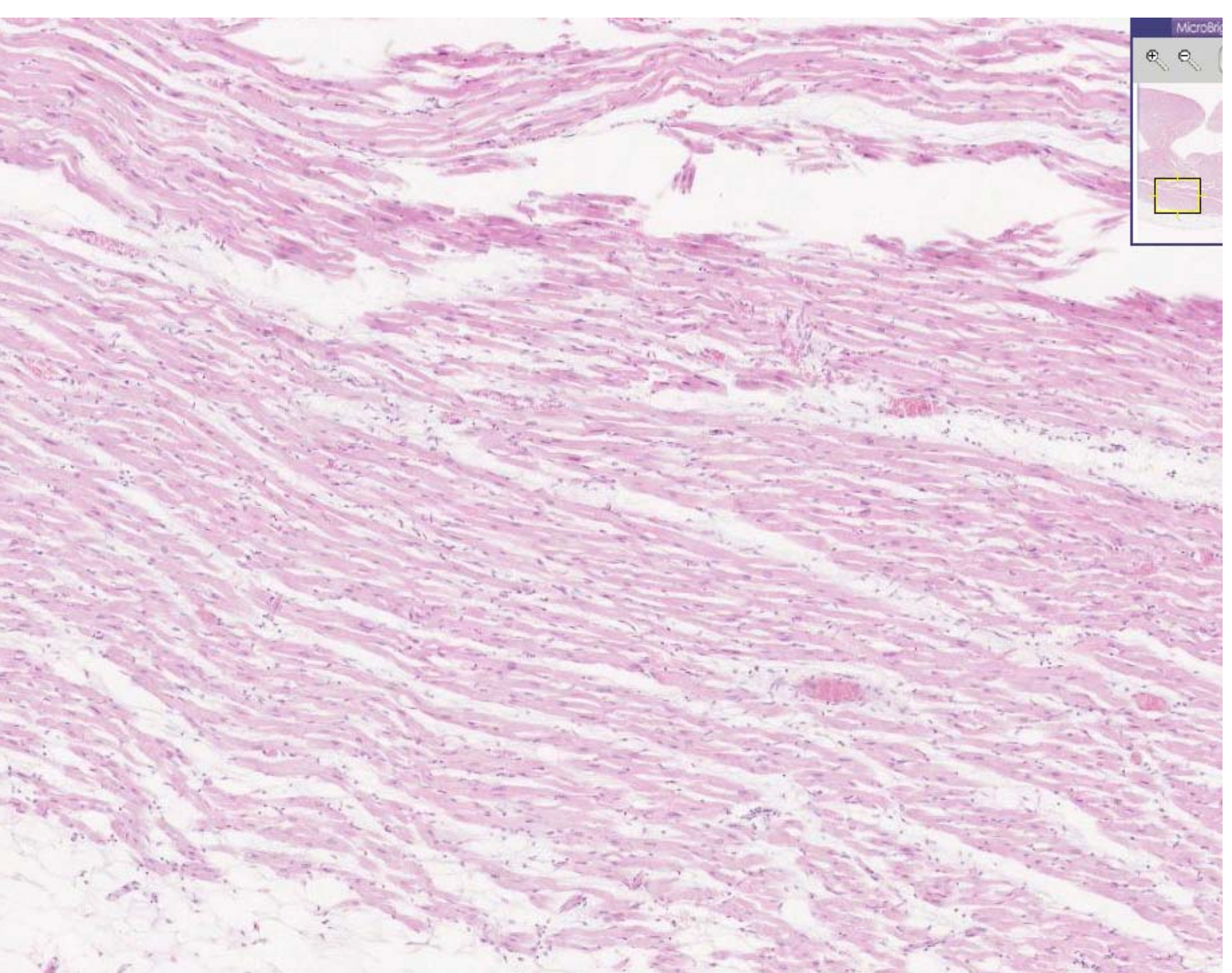




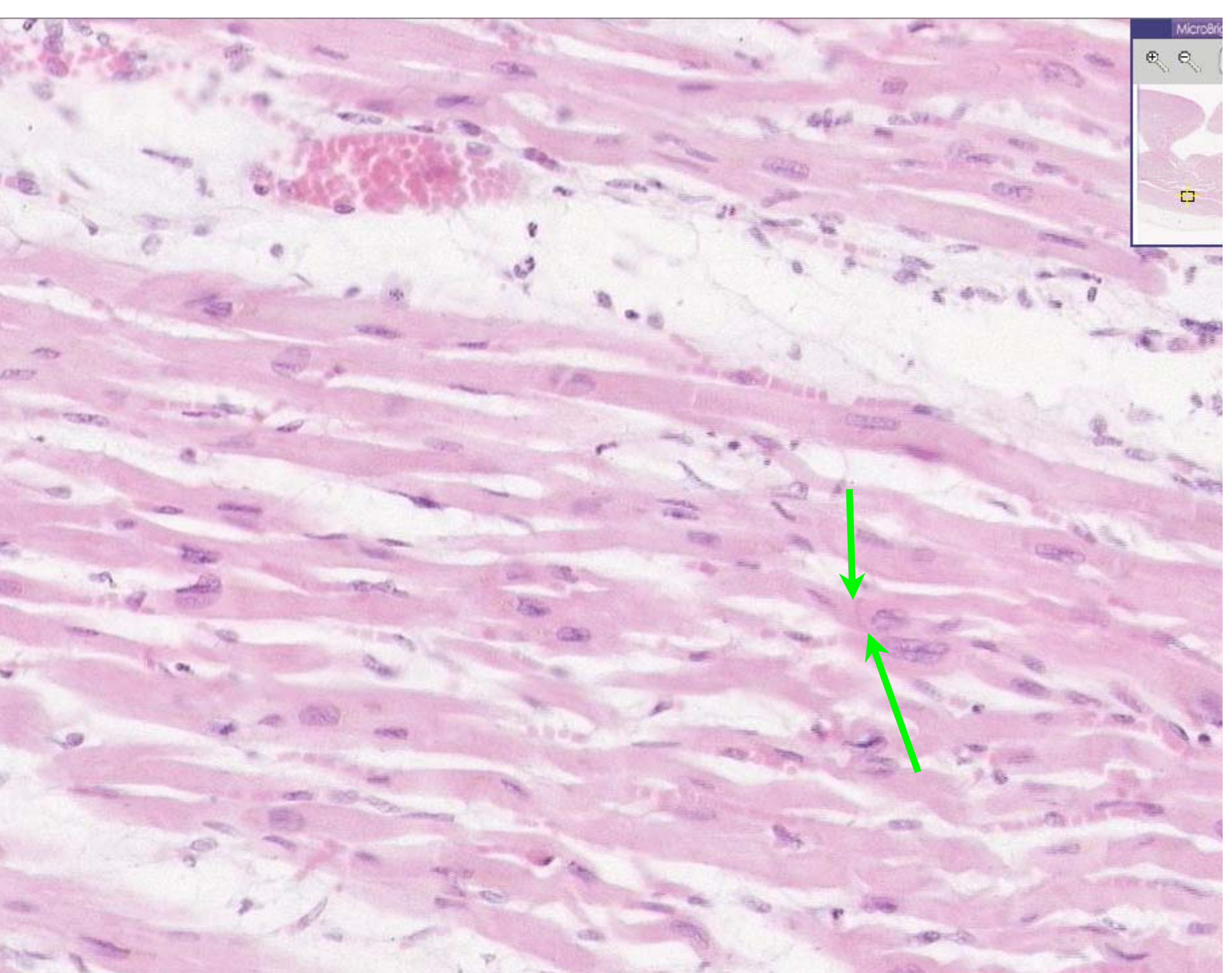














# Sarcomere

- From Z-line to Z-line
- dArk = A-band
  - Myosin+Actin
- lIght = I-band
  - Actin Only
- H-zone = light band in the middle

