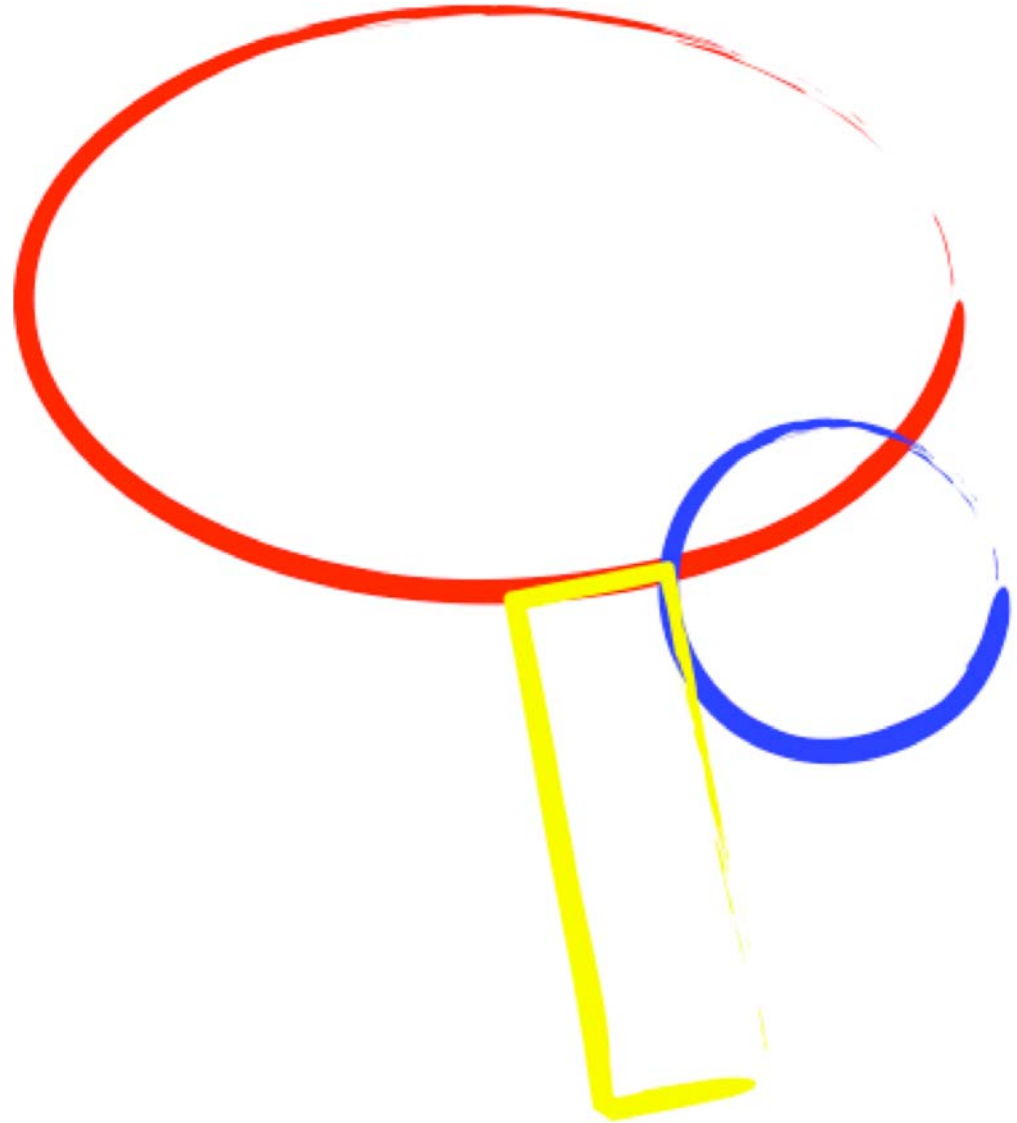


A215 Lab - Scope Day 6

CNS Histology & Upper Limb
muscles

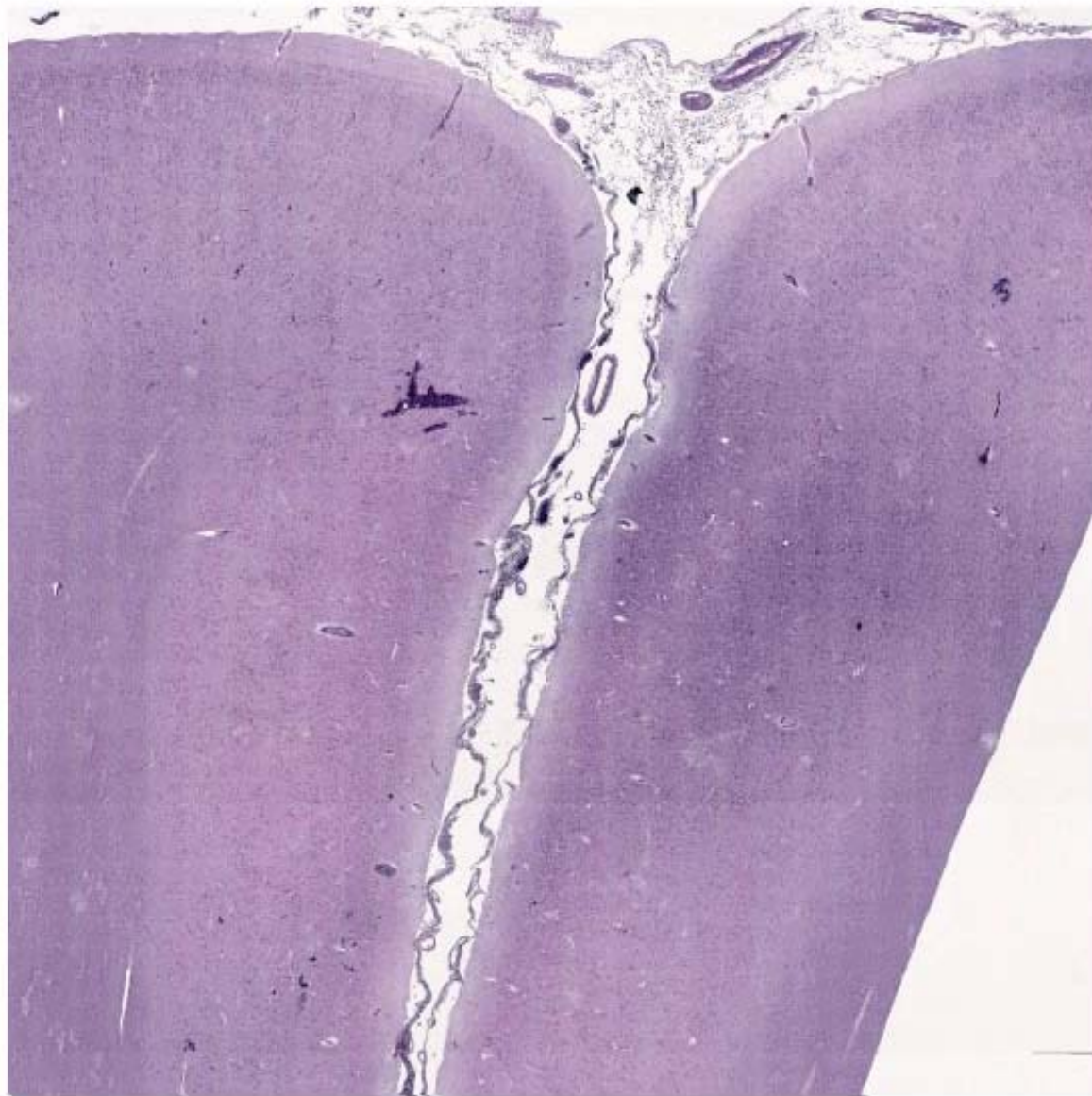
Parts of the CNS

- Cerebrum
- Cerebellum
- Spinal Cord



Cerebrum

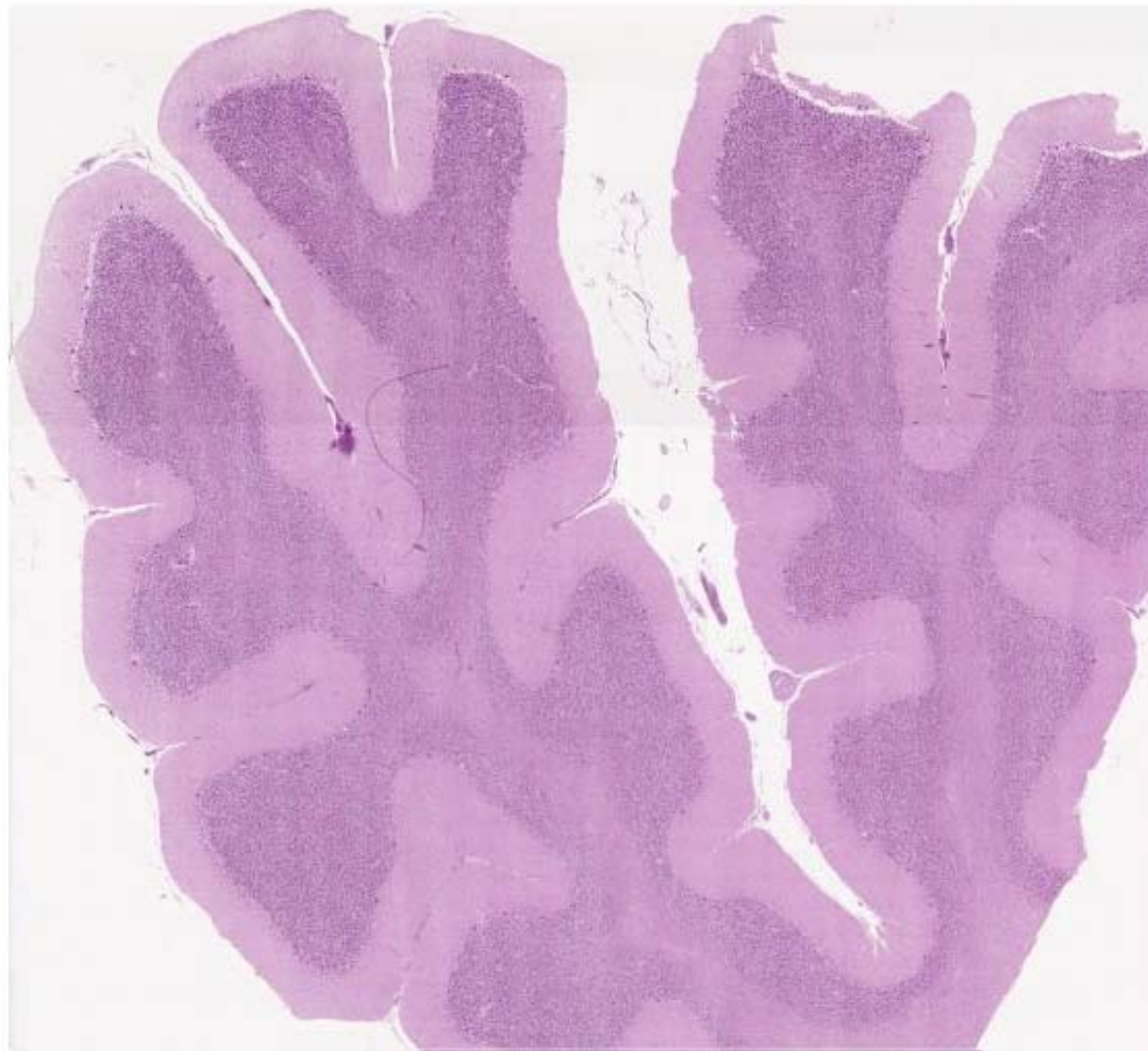
- **Cortex** (surface layer) of gray matter
 - Gray matter = substance containing the large cell bodies of neurons
 - White matter = substance containing the myelinated processes of neurons + nuclei of small glial cells
 - Region of lower nuclei density (lighter area)





Cerebellum

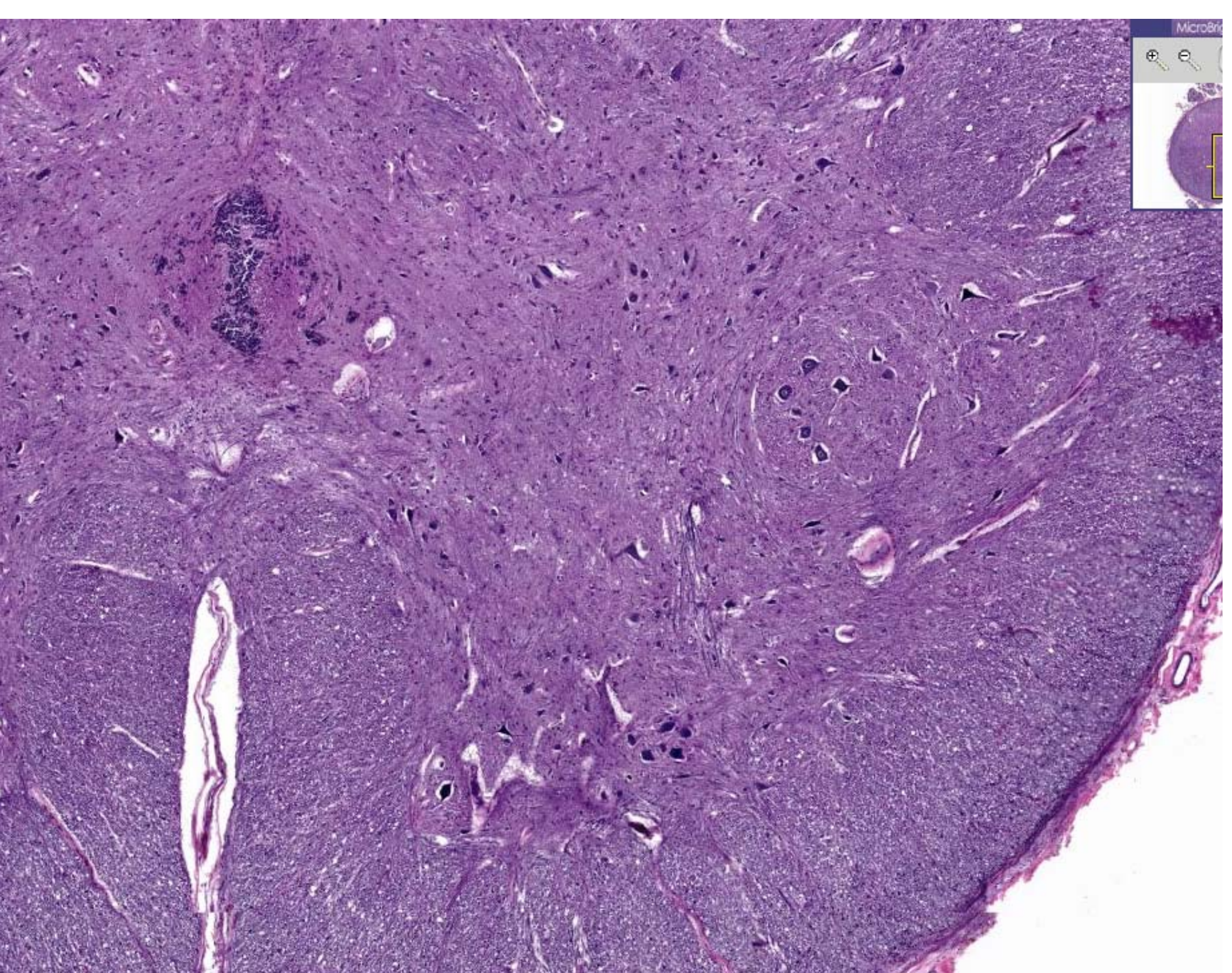
- Cortex of gray matter
- Highly folded around thin core of white matter

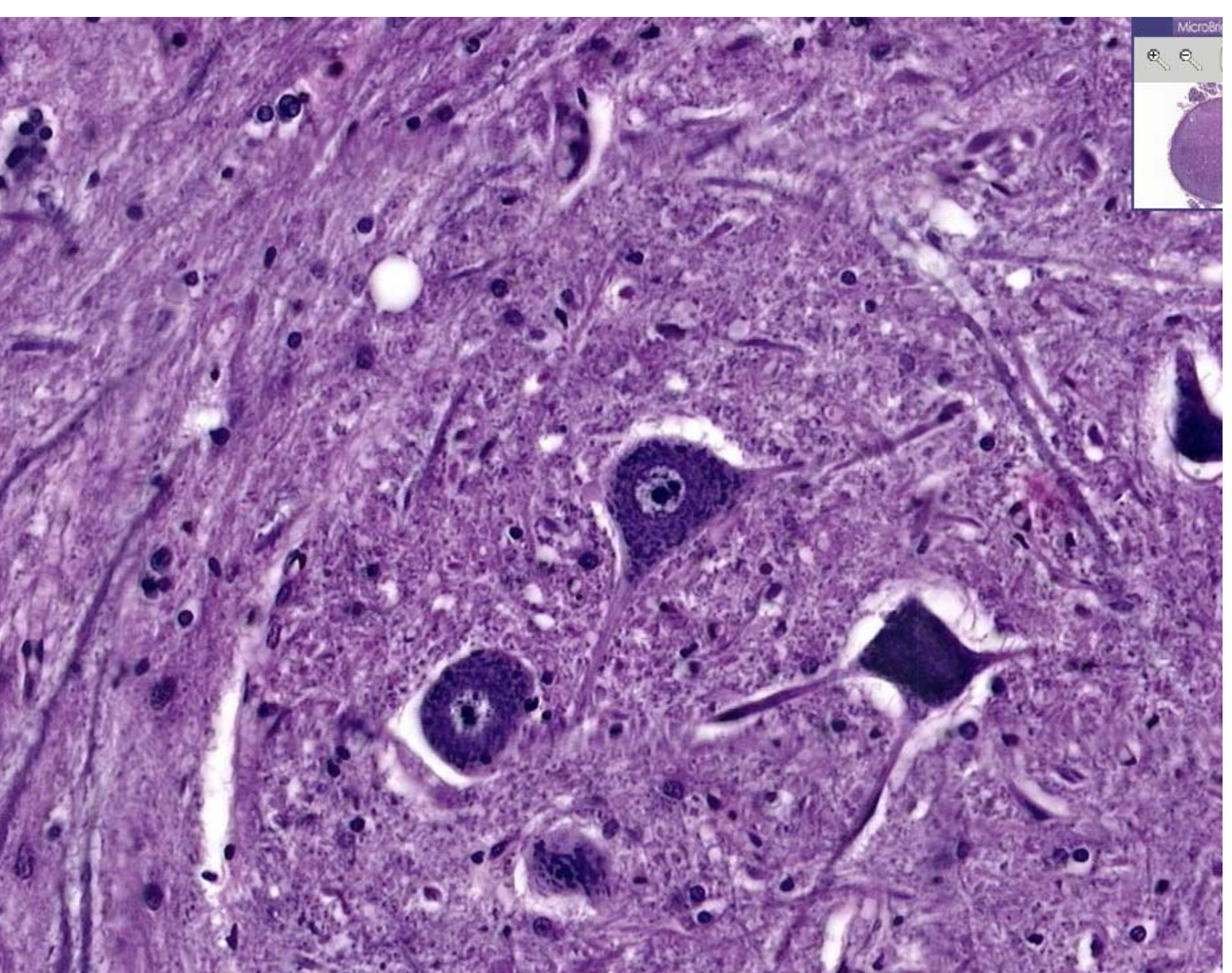


Spinal Cord

- Contains Grey Matter and White Matter
 - Where?
- Motor Neuron - anterior horn
 - cell body
 - Nucleus with dark Nucleolus
 - Nissl bodies = Rough ER in nerve cells
 - Nerve cell processes
 - axon hillock - clear cytoplasm

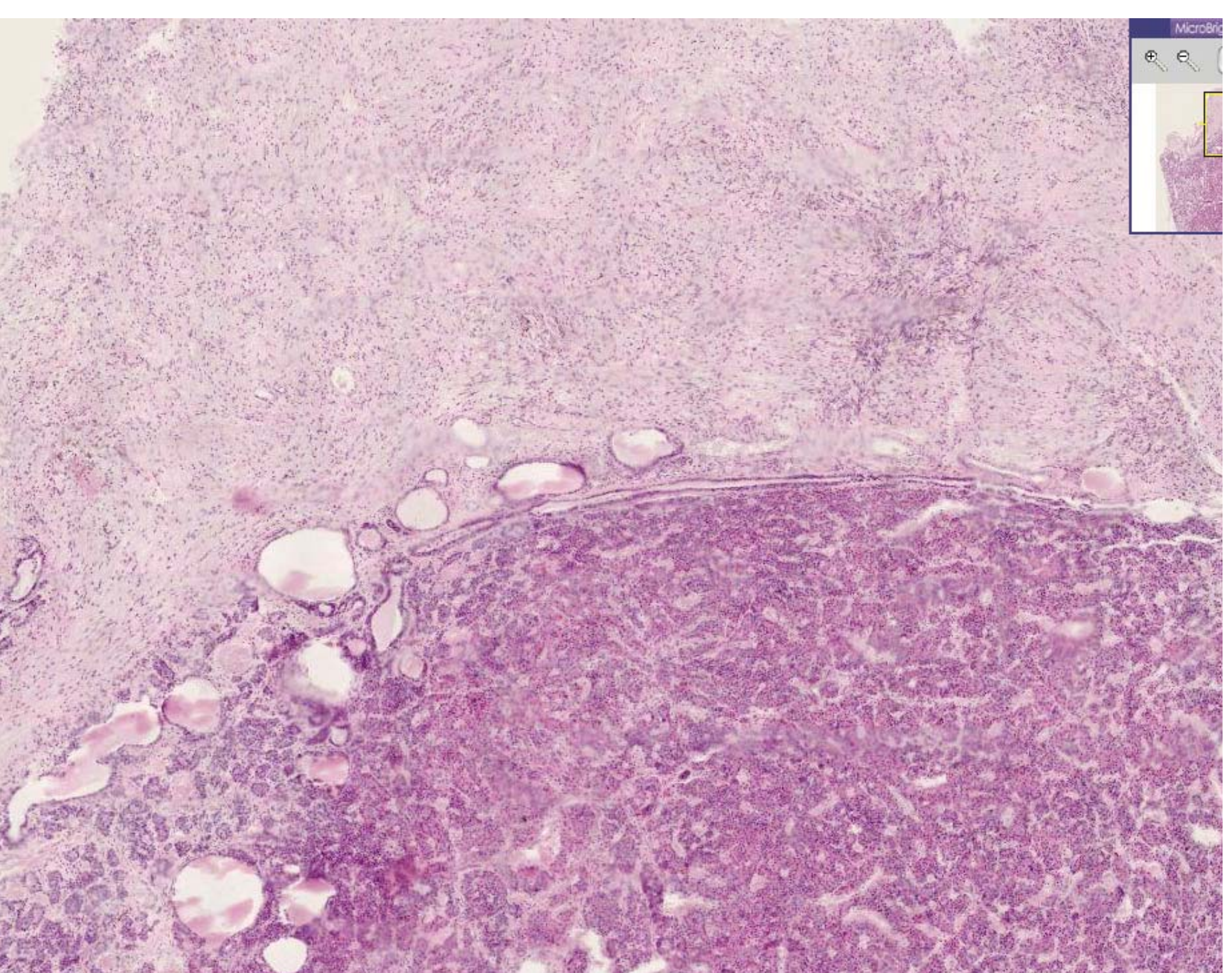






Pituitary Gland

- Posterior Lobe (neurohypophysis)
 - neural origins from hypothalamus
 - no neural cell bodies
- Anterior Lobe (adenohypophysis)
 - highly cellular (nuclei dense)



Cranial blood supply

- Arterial
 - Circle of Willis
 - series of arteries
 - Basilar Artery (1)
 - Vertebral Arteries (2)
- Venous
 - Cranial Venous (Dural) Sinuses

