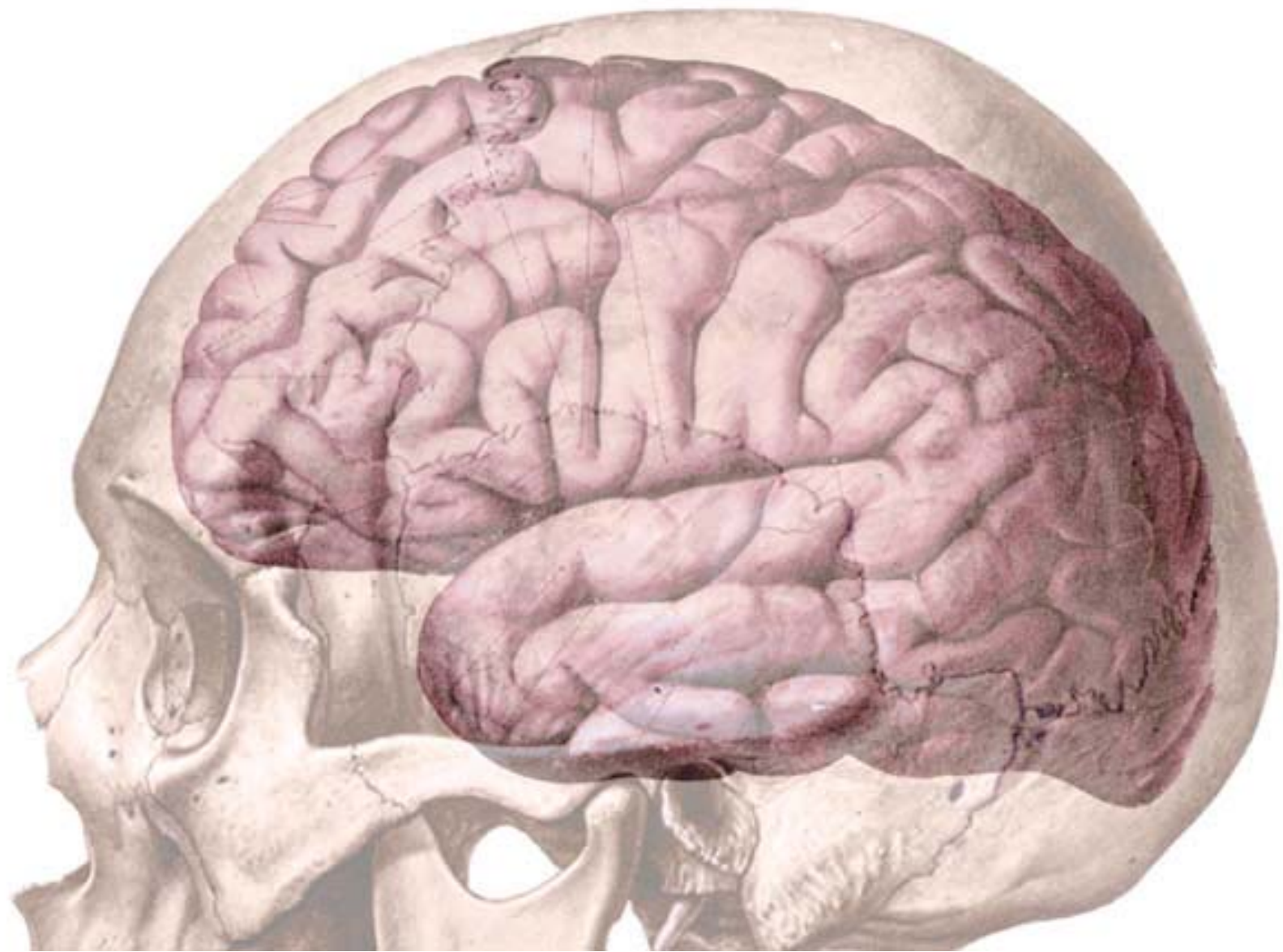


A215 Lab - Scope Day 7

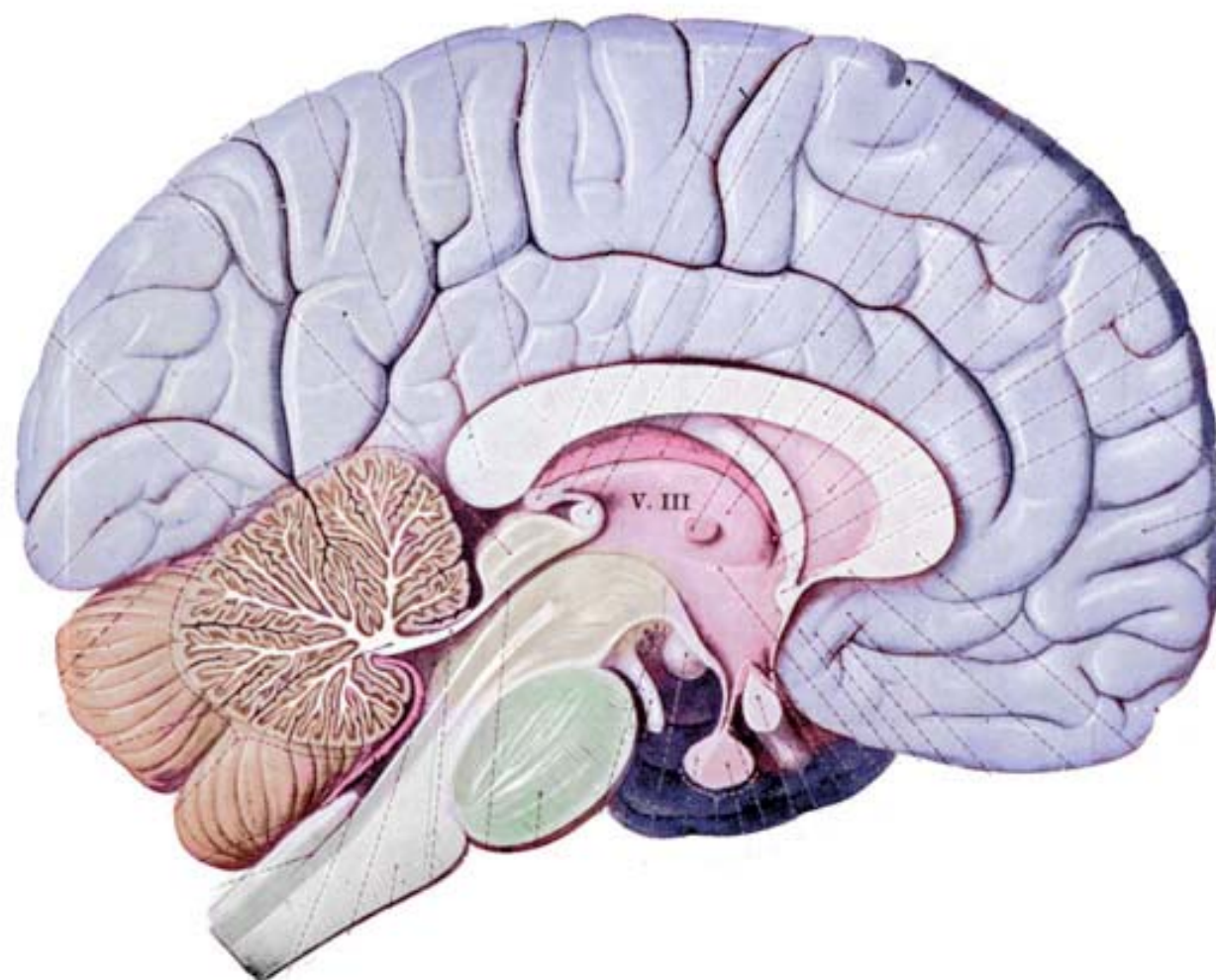
Brain Features



Subdivisions of the Brain

- 1.Cerebrum
- 2.Diencephalon
- 3.Mesencephalon
- 4.Cerebellum
- 5.Pons
- 6.Medulla oblongata

What structures does each subdivision include?



CSF filled spaces

- Ventricles
 - 3rd - bounded by thalamus on the side and hypothalamus at its base
 - 4th - tent-shaped cavity within pons and medulla oblongata
 - lateral - one within each hemisphere of cerebrum
 - mesencephalic aqueduct - connects 3rd & 4th