

A215 Lab - Scope Day 10

Circulatory Histology

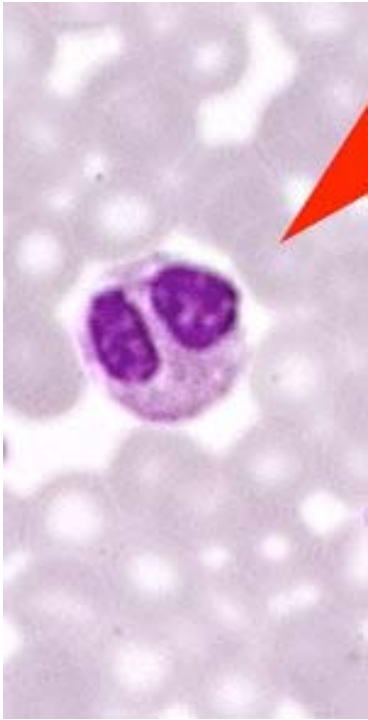
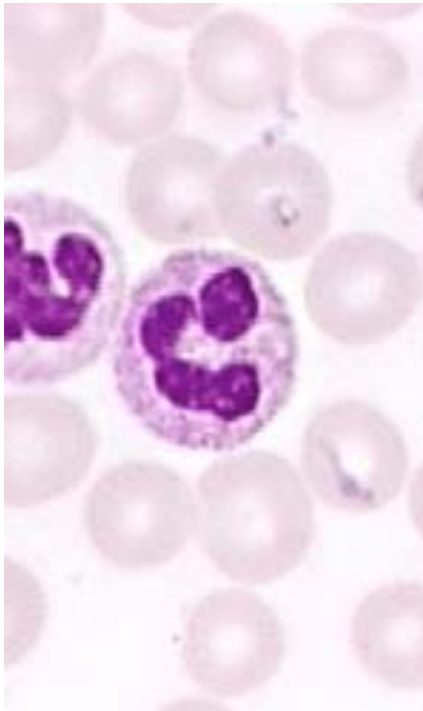
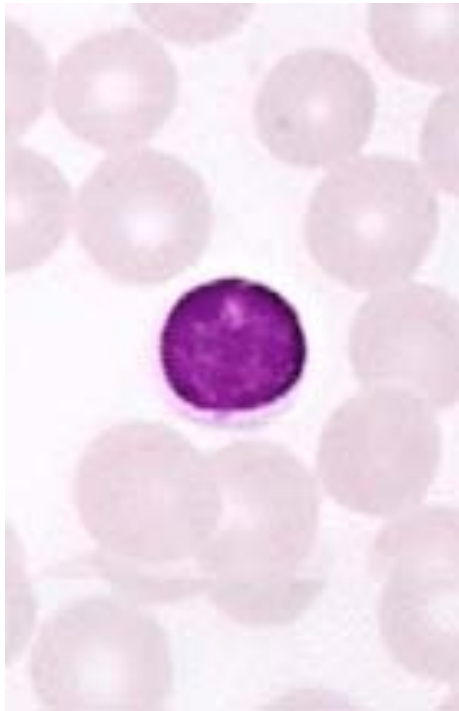

Blood Histology

- Blood - type of tissue
 - Erythrocytes - Red Blood Cells
 - Leukocytes - White Blood Cells
 - Thrombocytes (Plateletes)

Leukocytes

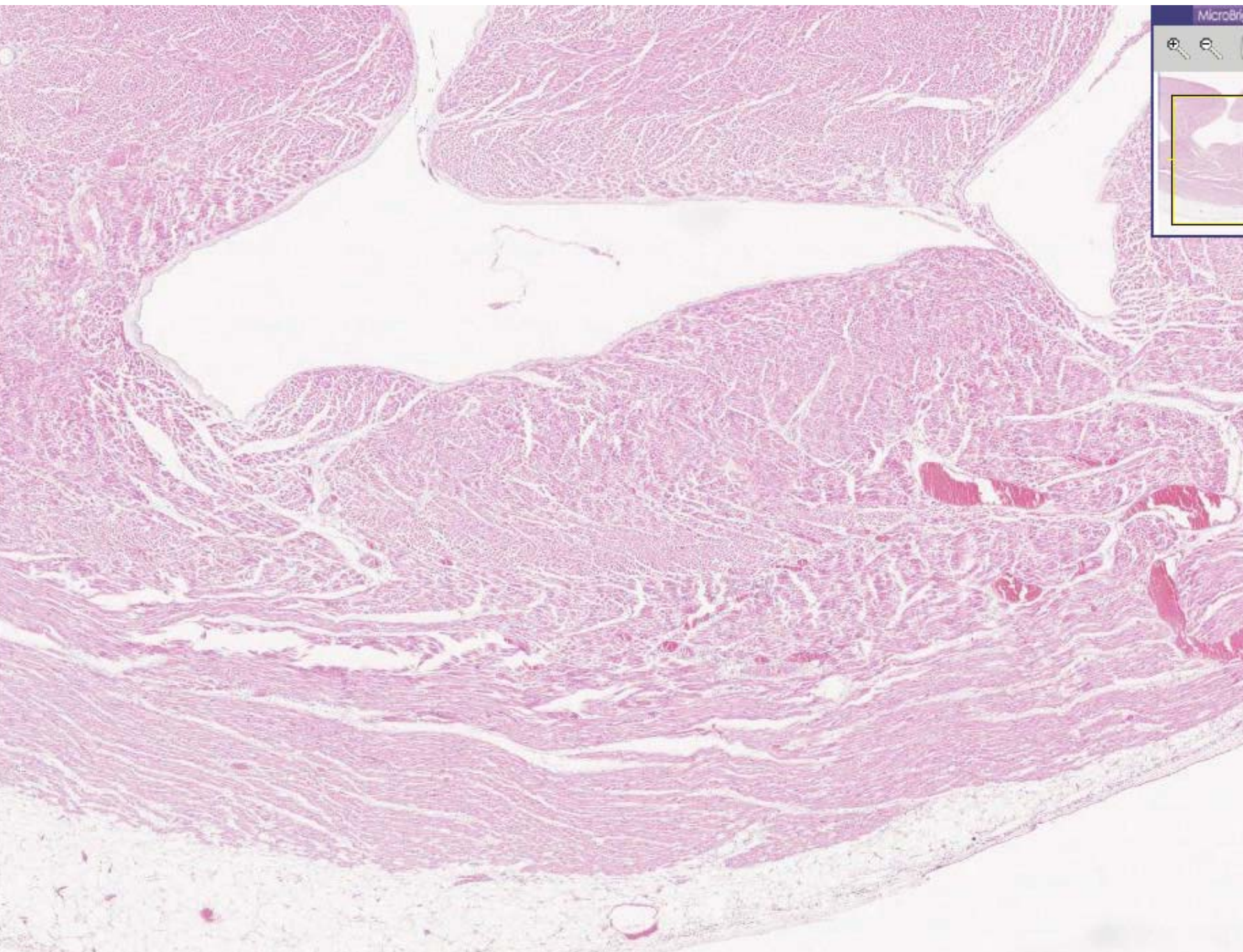
Granulocytes		Agranulocytes	
Eosinophil	Neutrophil	Lymphocyte	Monocyte
-4%	-60%	-30%	-6%
-bilobed nucleus	-multi-lobed nucleus	-large round nuclei	-largest
-faint red stained cytoplasm	-neutral staining	-very little cytoplasm	-large indented (C-shaped) nuclei
	-fine granules		

Leukocytes

Granulocytes		Agranulocytes	
Eosinophil	Neutrophil	Lymphocyte	Monocyte
 A micrograph of an eosinophil, a type of granulocyte. The cell has a large, bilobed nucleus stained dark purple. The cytoplasm is filled with numerous reddish-orange granules. A red arrow points to the cell.	 A micrograph of a neutrophil, a type of granulocyte. The cell has a large, multi-lobed nucleus stained dark purple. The cytoplasm is filled with numerous light purple granules.	 A micrograph of a lymphocyte, a type of agranulocyte. The cell has a large, round nucleus stained dark purple. The cytoplasm is clear and light blue.	 A micrograph of a monocyte, a type of agranulocyte. The cell has a large, kidney-shaped nucleus stained dark purple. The cytoplasm is clear and light blue.

Heart Histology

- 3 Layers
 - Epicardium
 - Myocardium
 - cardiac muscle
 - intercalated discs
 - Endocardium



Arteries vs. Veins

	Characteristics	
	Gross	Histology
Arteries	-muscular -round	multiple layers of smooth muscle
Veins	-thin -flat	very little smooth muscle

Vessel Histology

- Muscular Artery

- 3 layers

- Tunica Externa

- Tunica Media

- contains > 6 layers of smooth muscle

- Tunica Intima

- Arteriole - at most 6 layers of smooth muscle

- Vein and venule - thin wall with larger luminal diameter

Vessel Slide



