

A215 Lab - Scope Day 14

Urinary Histology

Kidney

- Composed of over one million nephrons
- Kidney made of 3 layers
 - Renal capsule - outer covering
 - Cortex - outer region containing renal corpusles
 - Medulla - inner region w/o renal corpusles

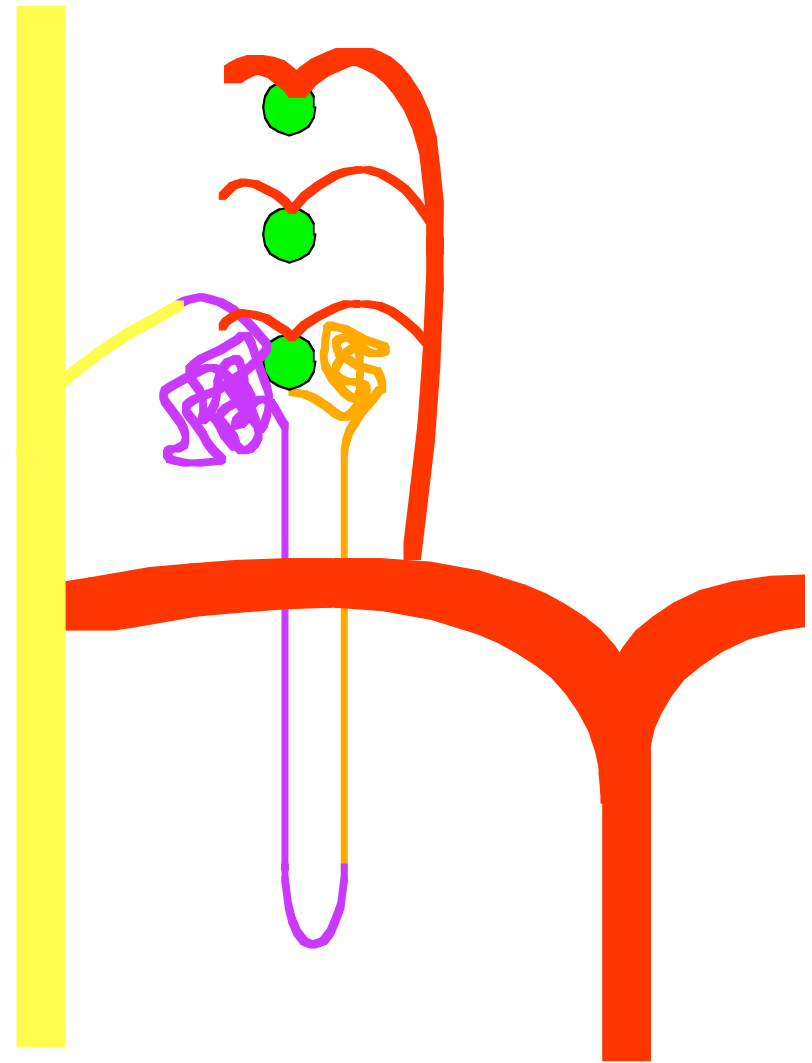
Nephron

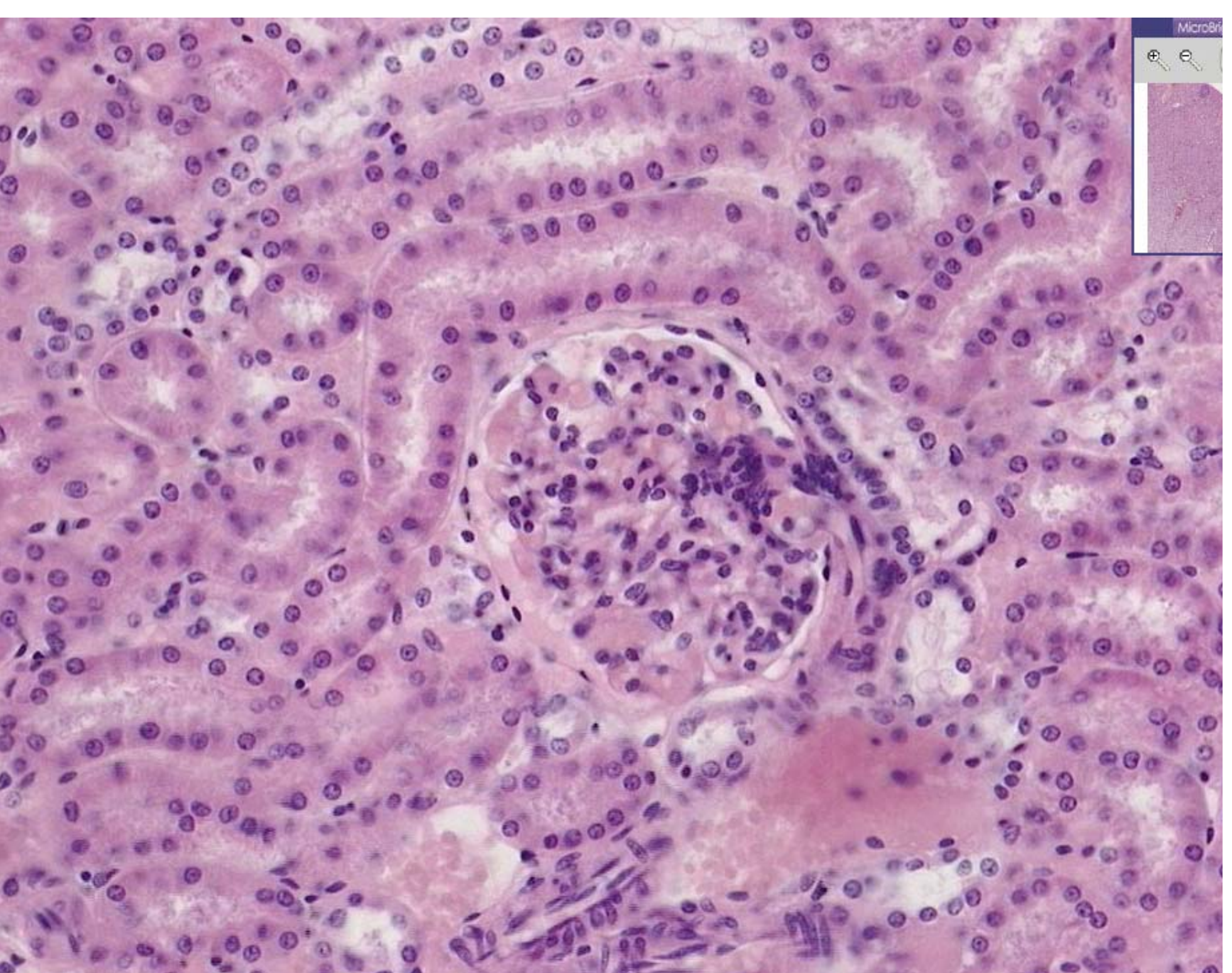
Filtration Component

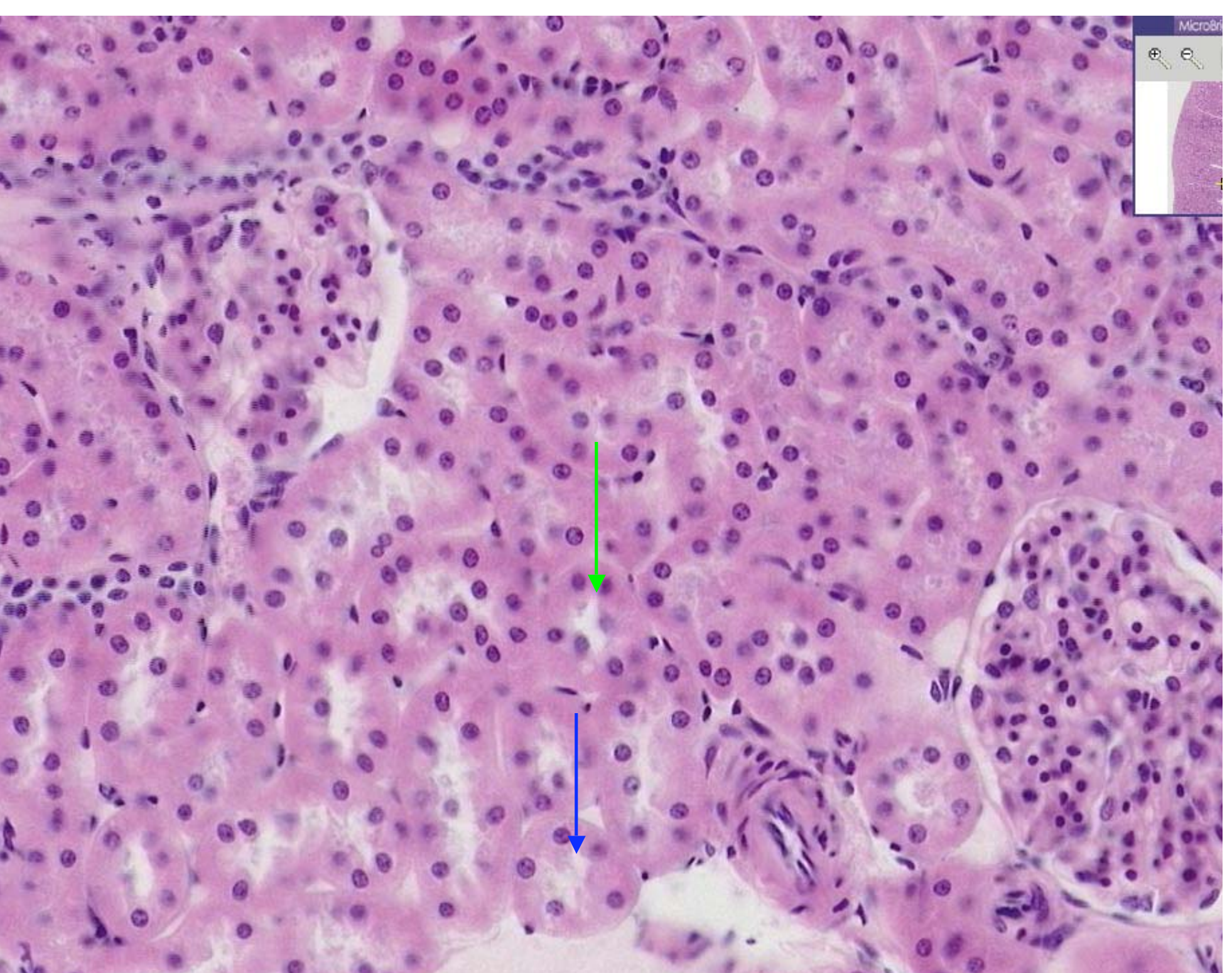
- Renal Corpuscle
 - glomerulus
 - glomerular (“Bowman’s) capsule
 - capsular space

Nephron

- Proximal Convoluted Tubules - w/ microvillus border
- Nephron Loop (Loop of Henle)
- Distal Convoluted Tubules
 - macula densa

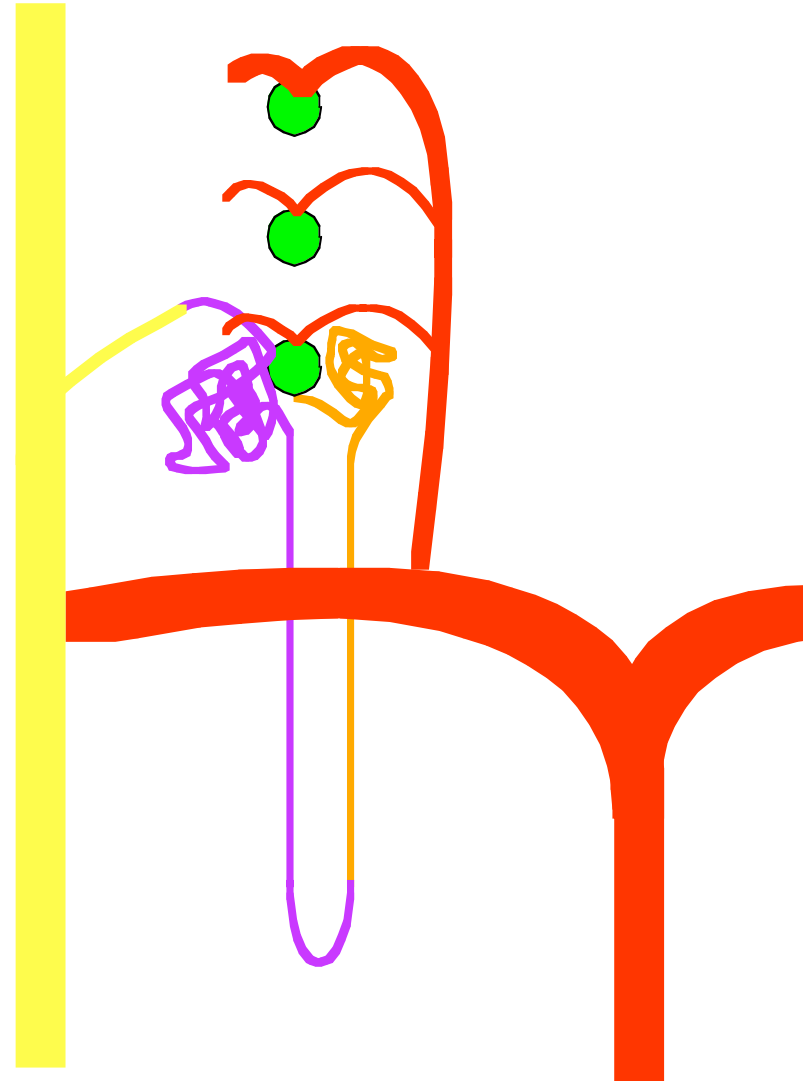






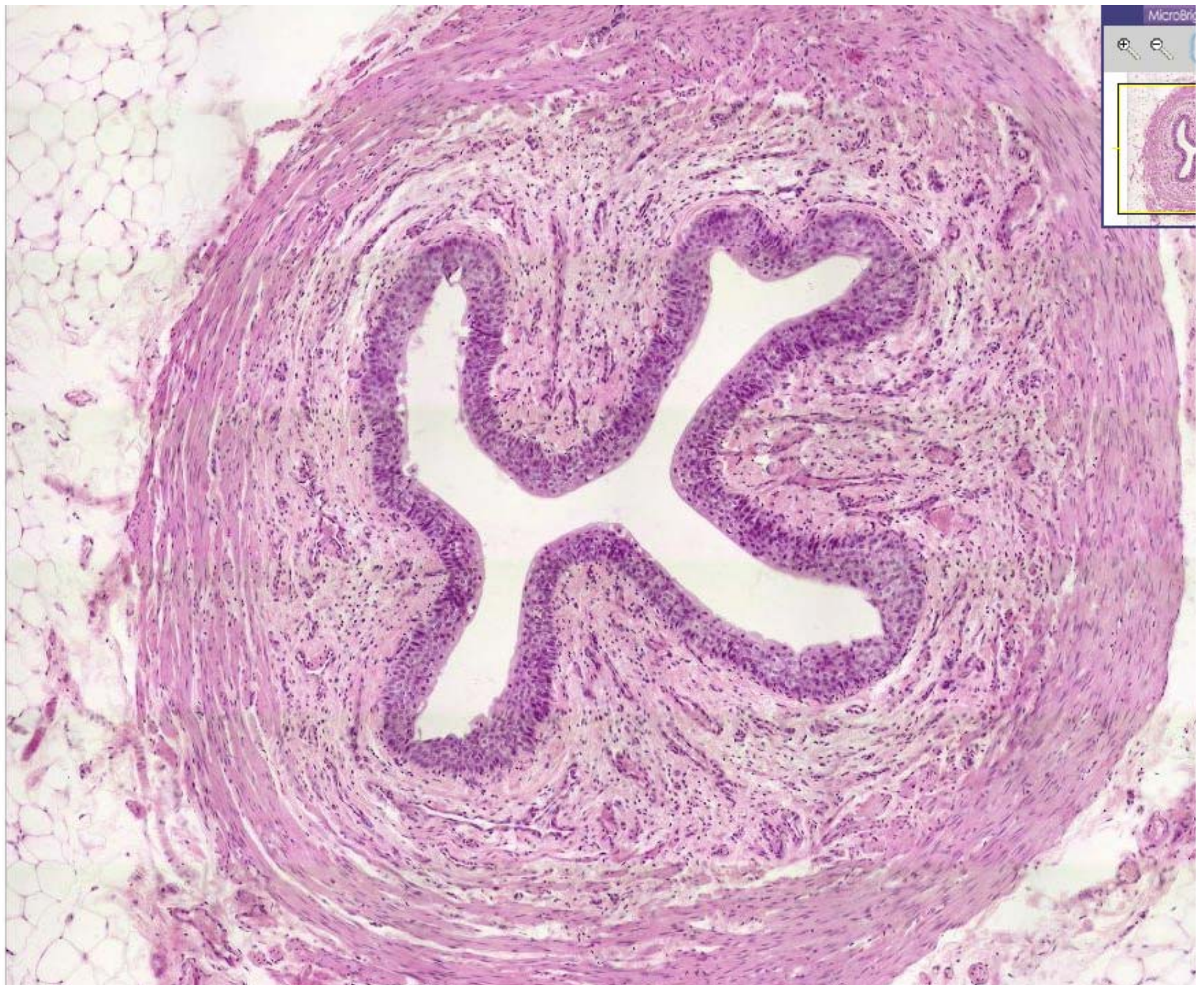
Kidney Blood Flow

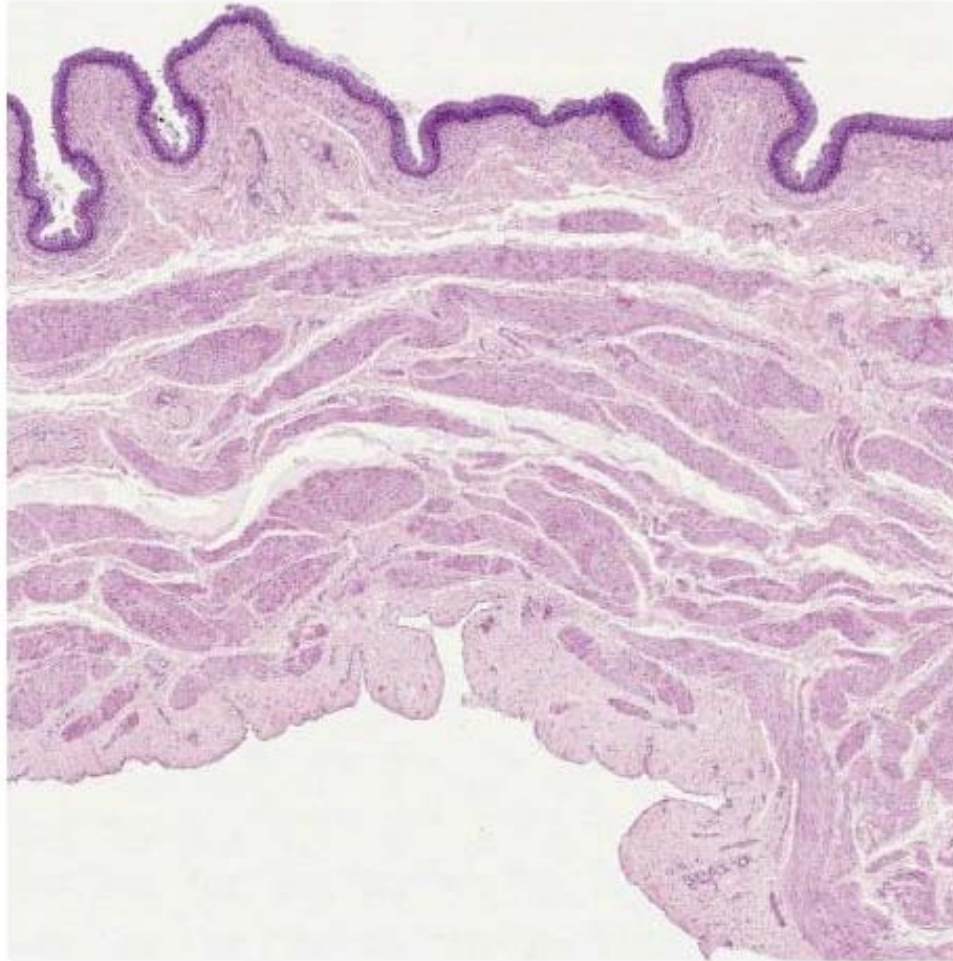
- Arteries
 - Renal Arteries
 - Interlobar Arteries
 - Arcuate Arteries
 - Interlobular Arteries
 - Afferent arterioles
 - Efferent arterioles
 - Peritubular Capillaries
 - Vasa Recta



Transport and Storage

- Transitional Epithelium lined
- ureters
 - 2 layered muscularis
- urinary bladder
 - 3 layered muscularis





Adrenal Gland

- Located superiorly to kidneys and surrounded by a mass of adipose tissue
- 2 Regions
 - Outer Cortex
 - Inner Medulla

