



Λαοκόων Laocoon

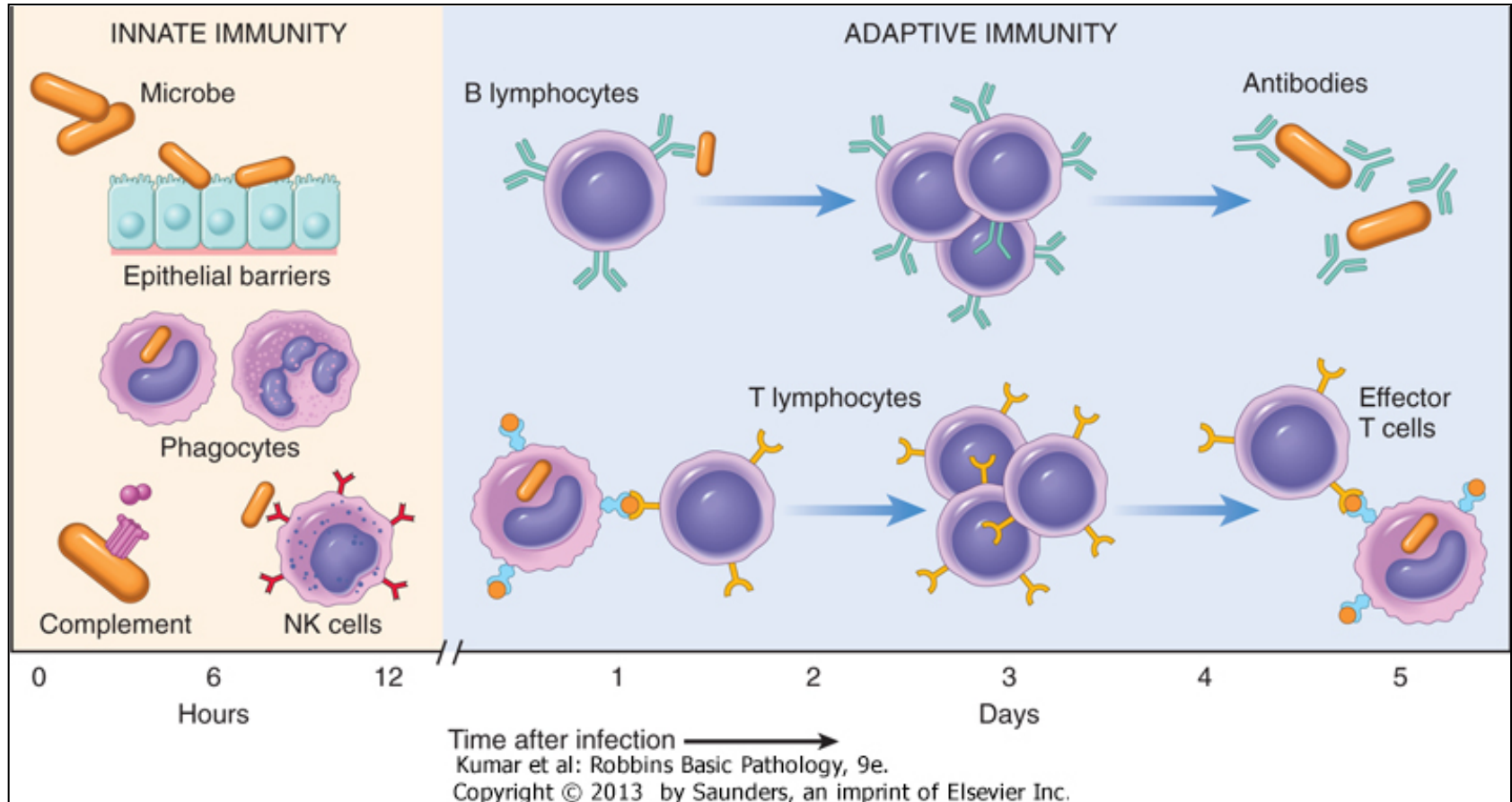
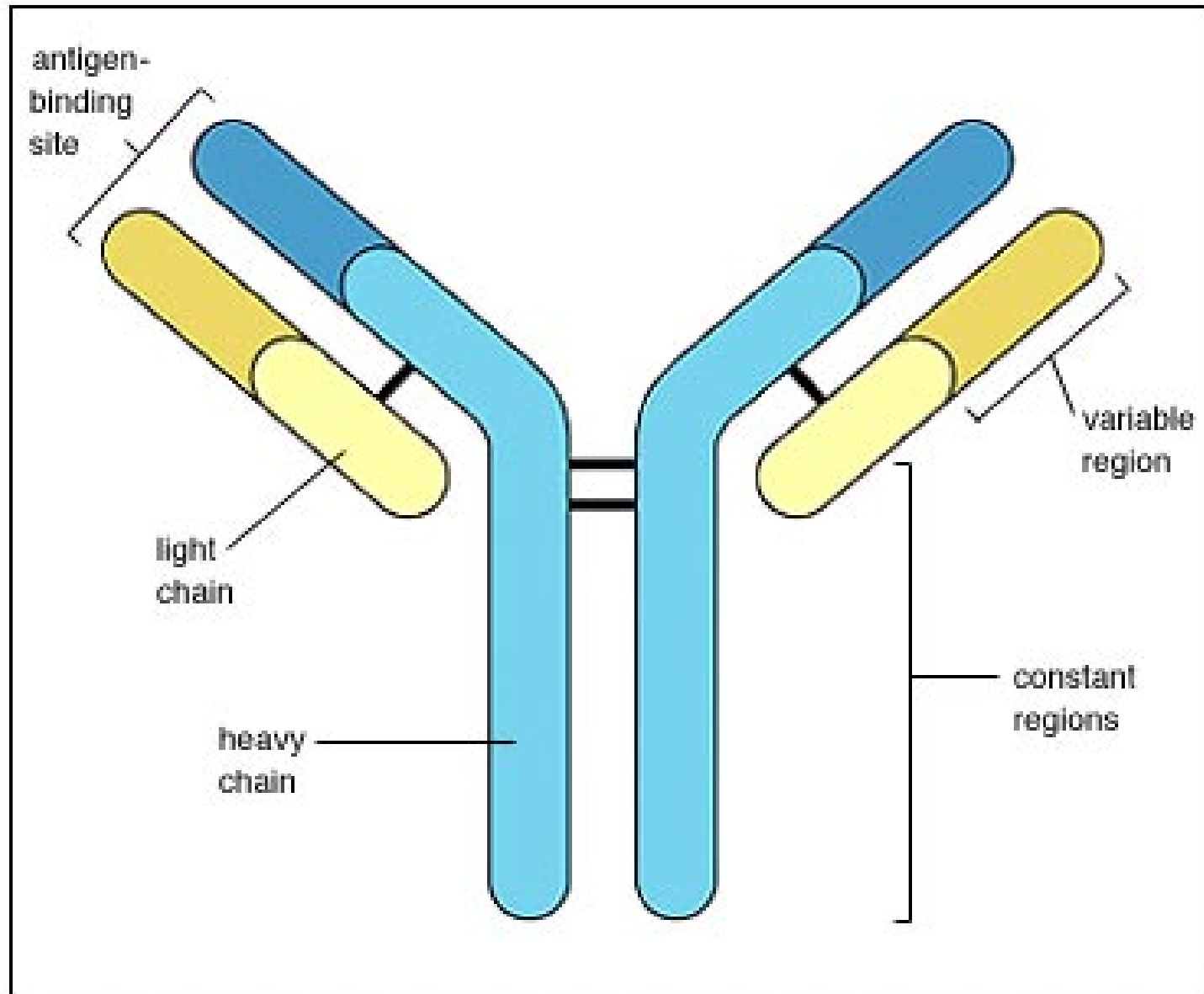


Figure 4-1



IgH Germline



D_H - J_H Joining



V_H - D_H - J_H Joining



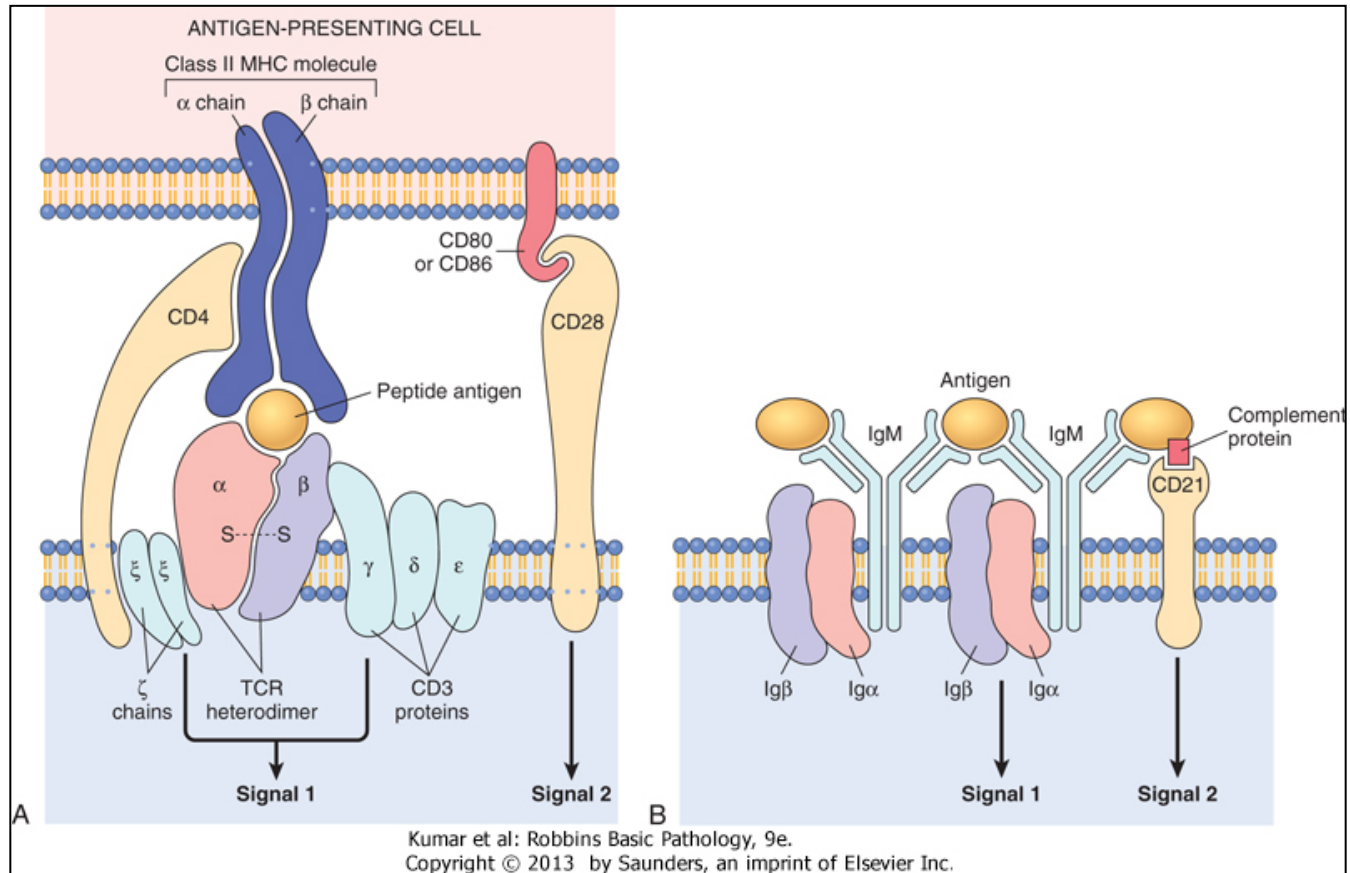
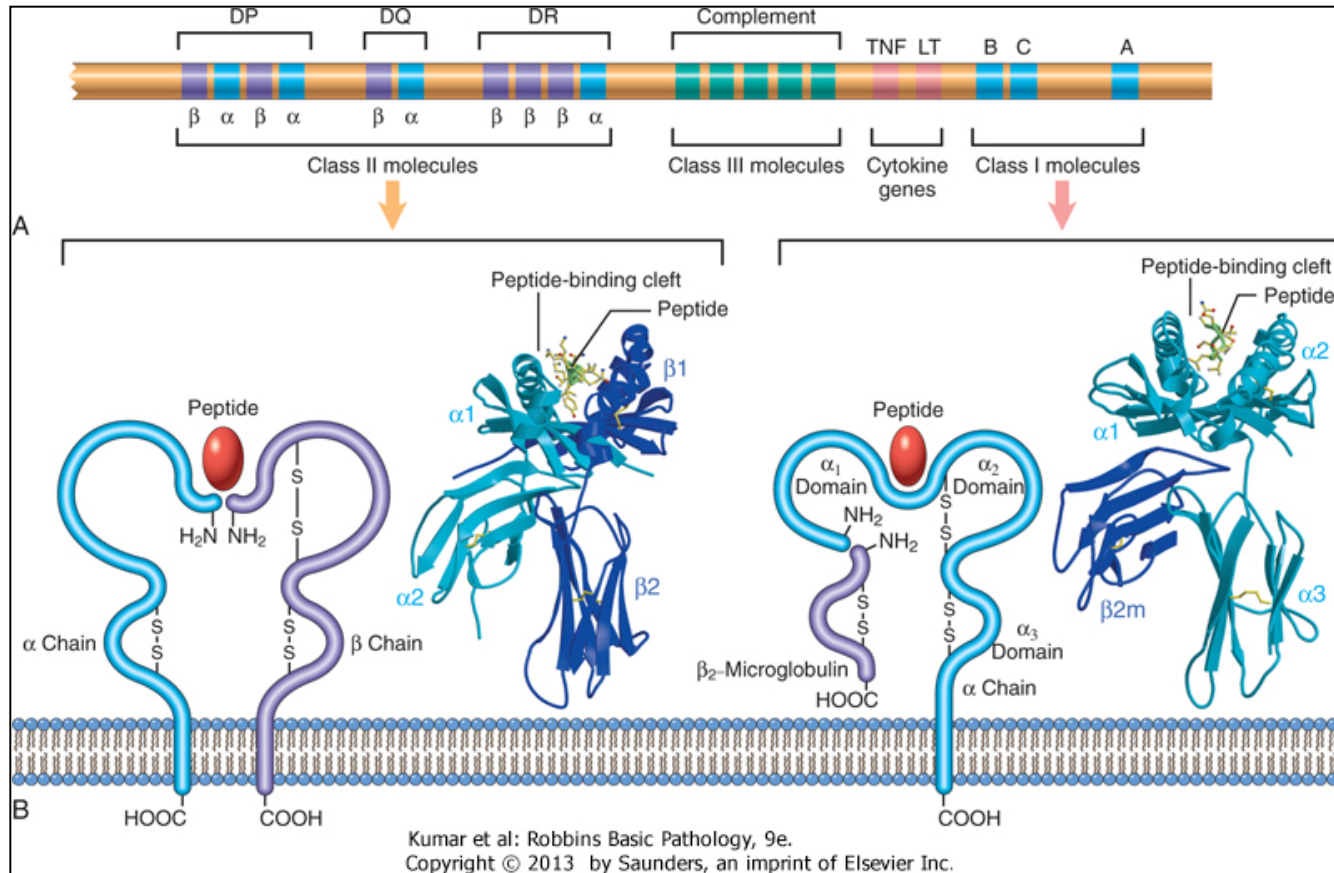
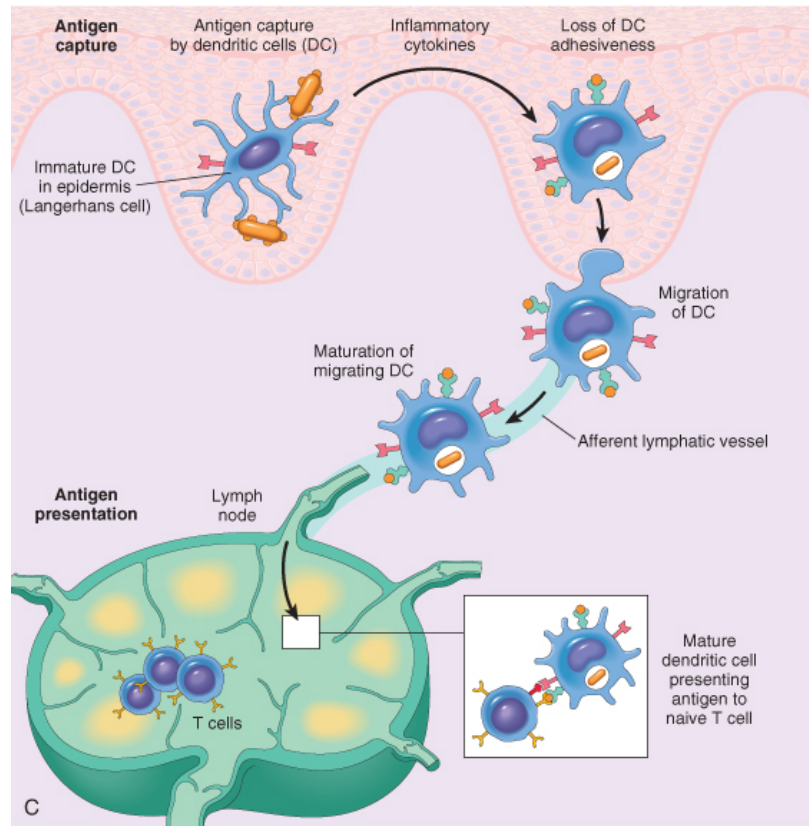


Figure 4-2

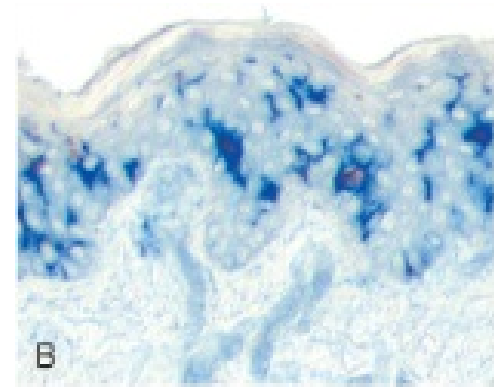


HLA: Major Histocompatibility Complex

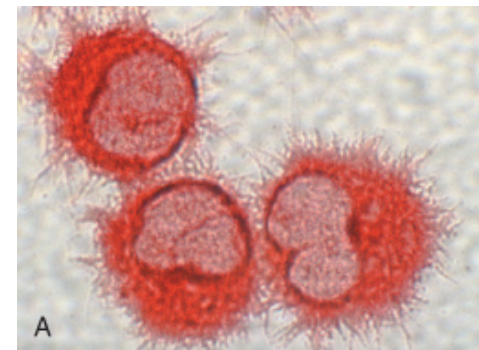
Figure 4-3



© Elsevier 2005



© Elsevier 2005



© Elsevier 2005

Dendritic cells

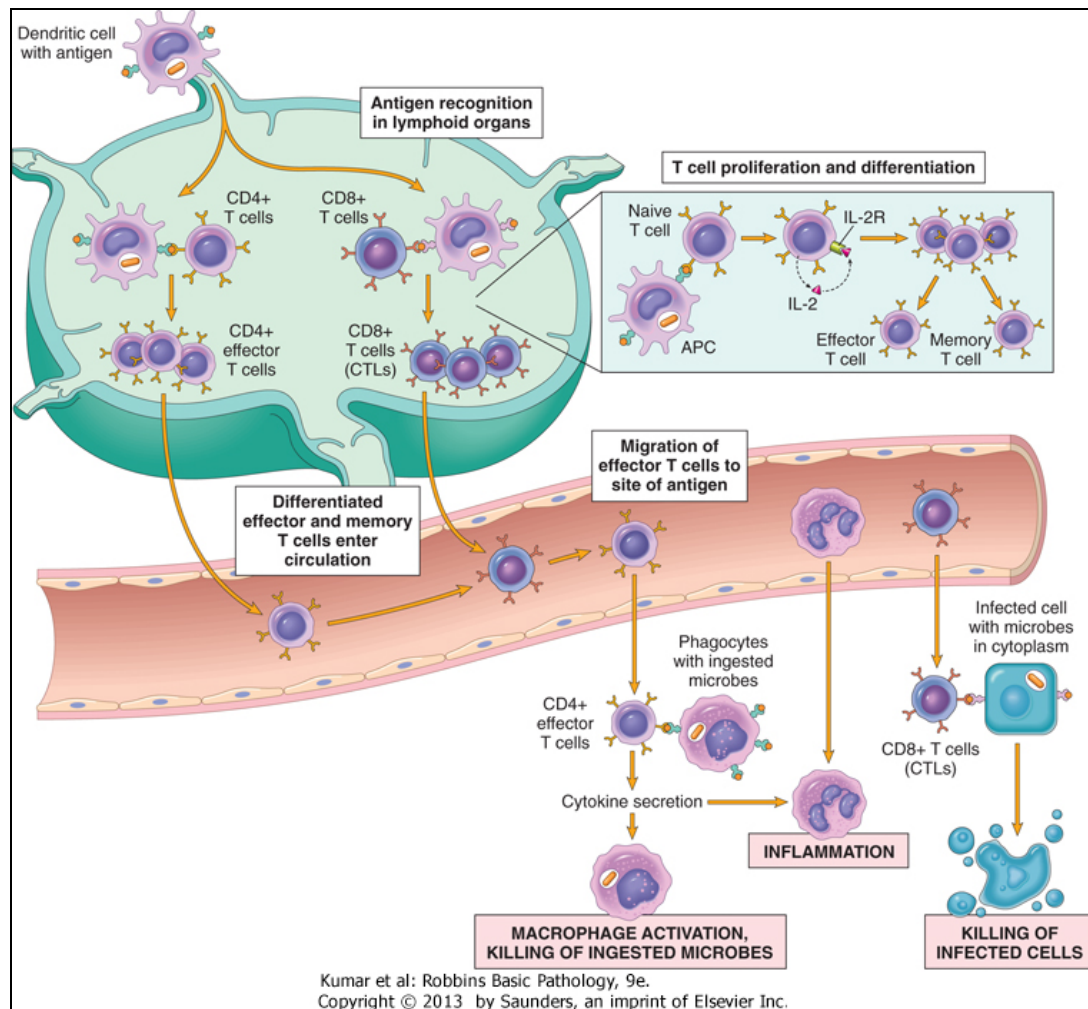
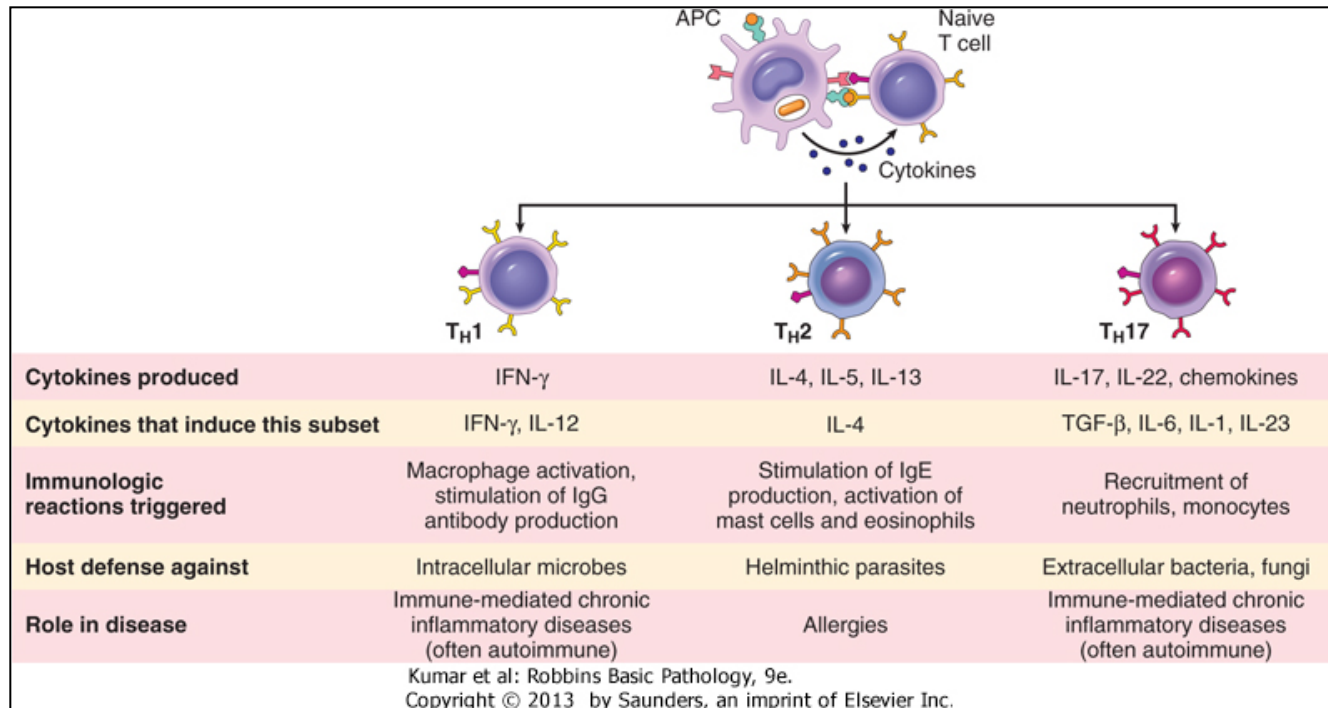


Figure 4-4



CD4 helper cell subsets and cytokines
Figure 4-5

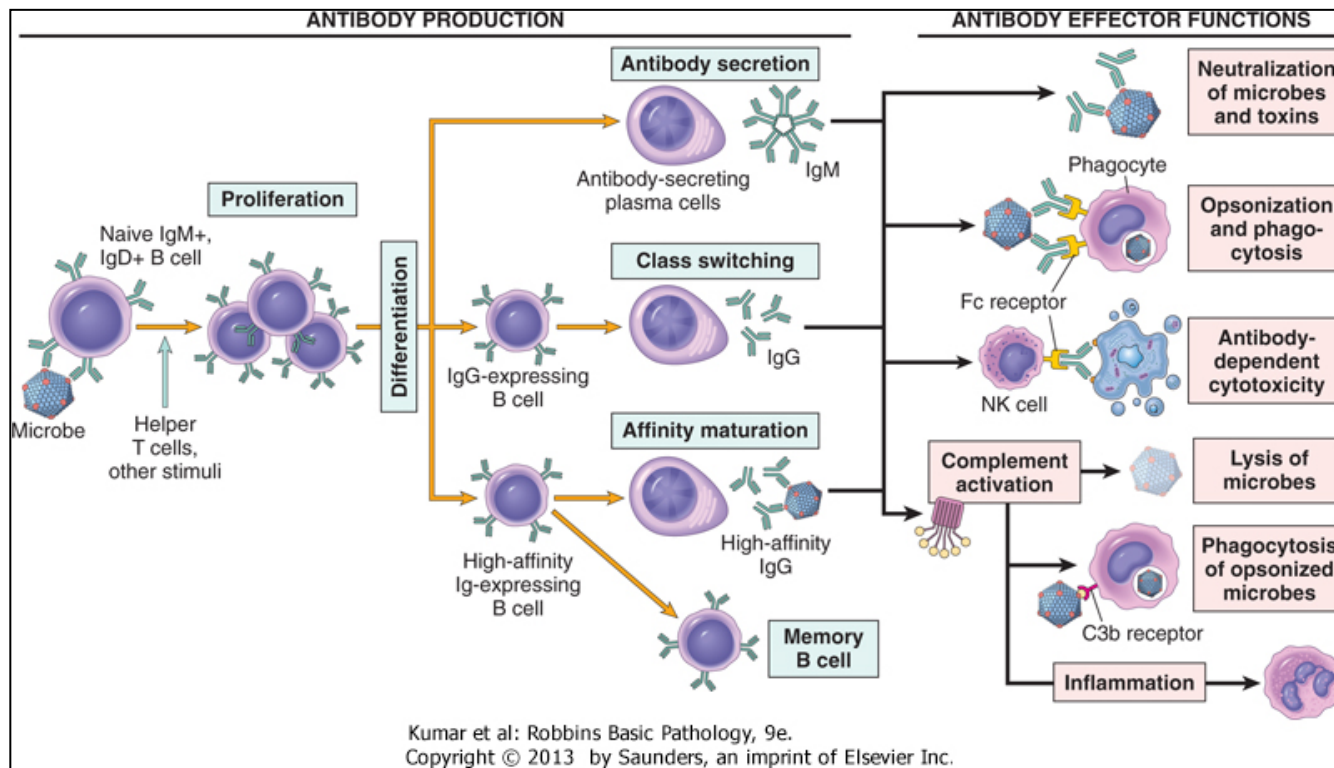
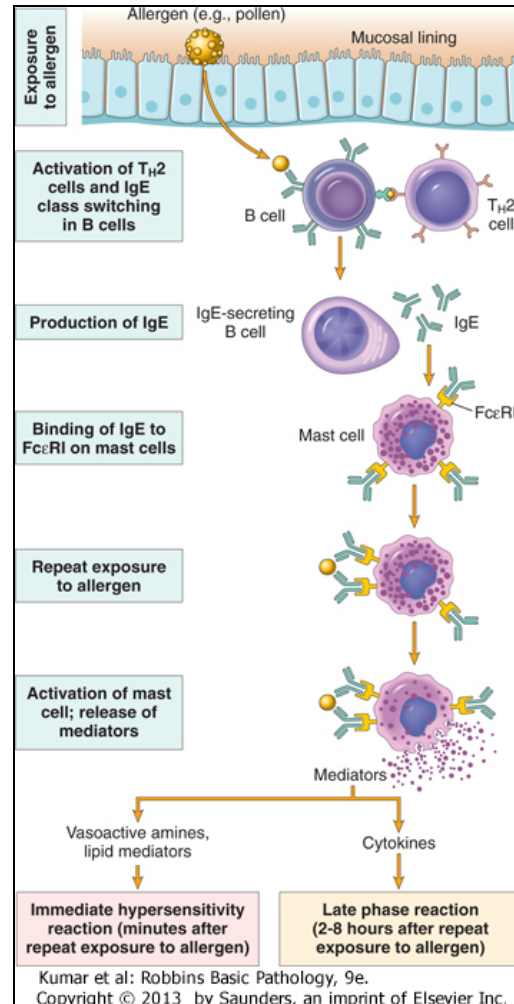


Figure 4-6

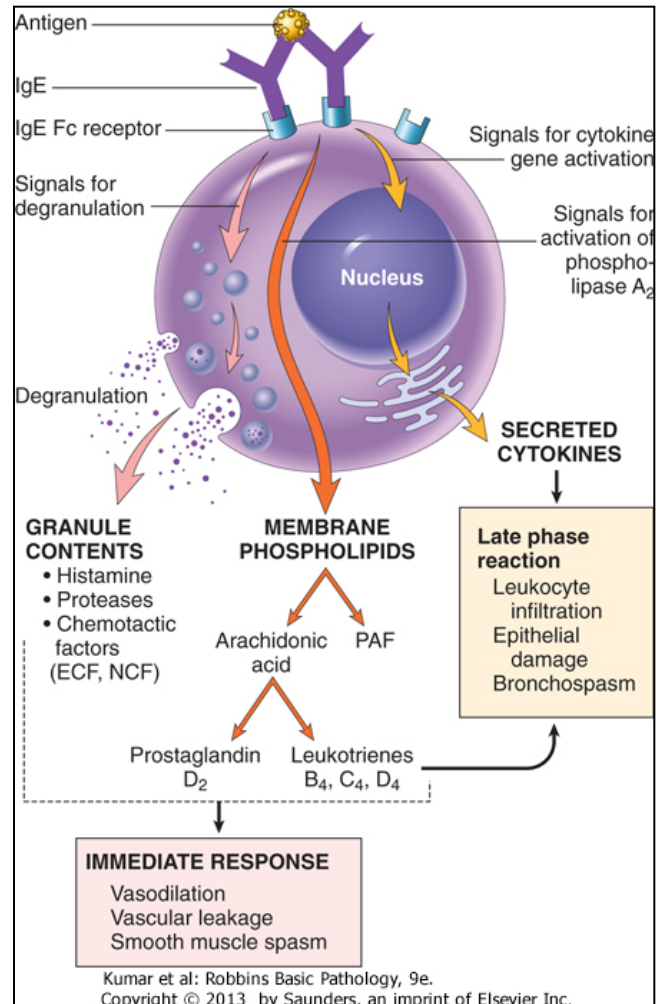
Type I Hypersensitivity

Figure 4-7



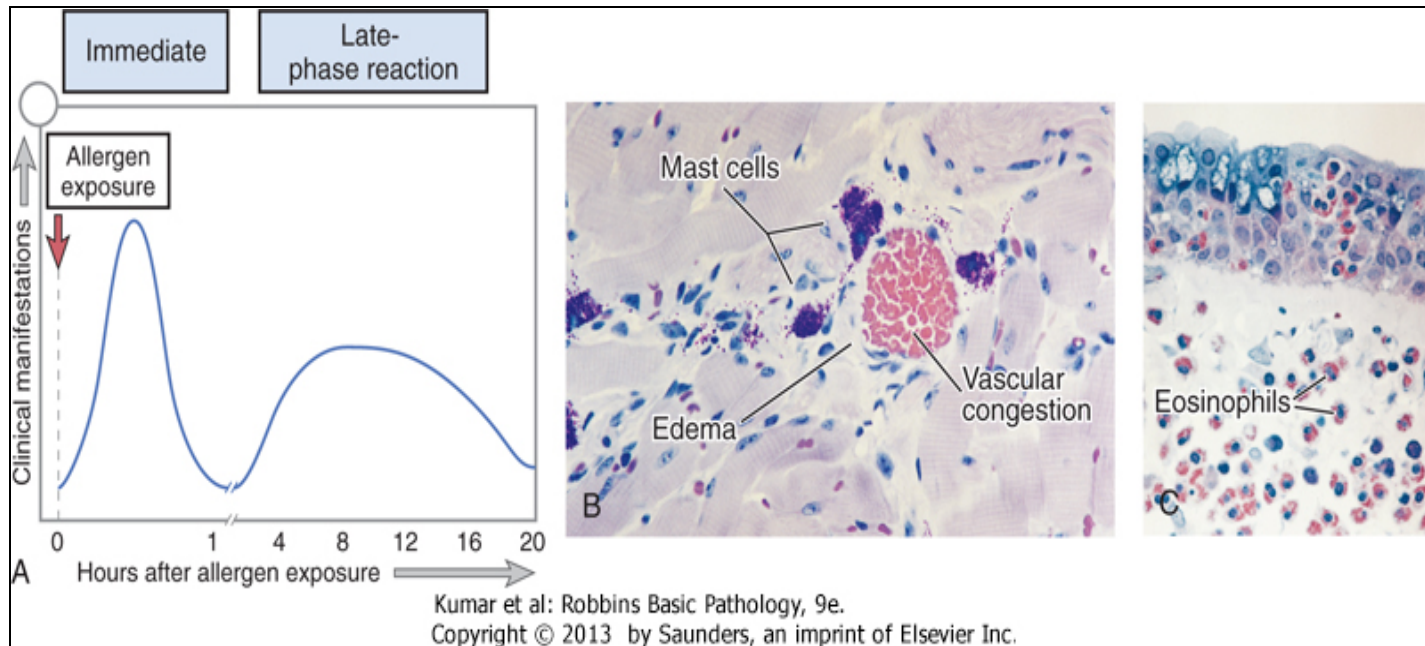
Mast Cell Mediators

Figure 4-8

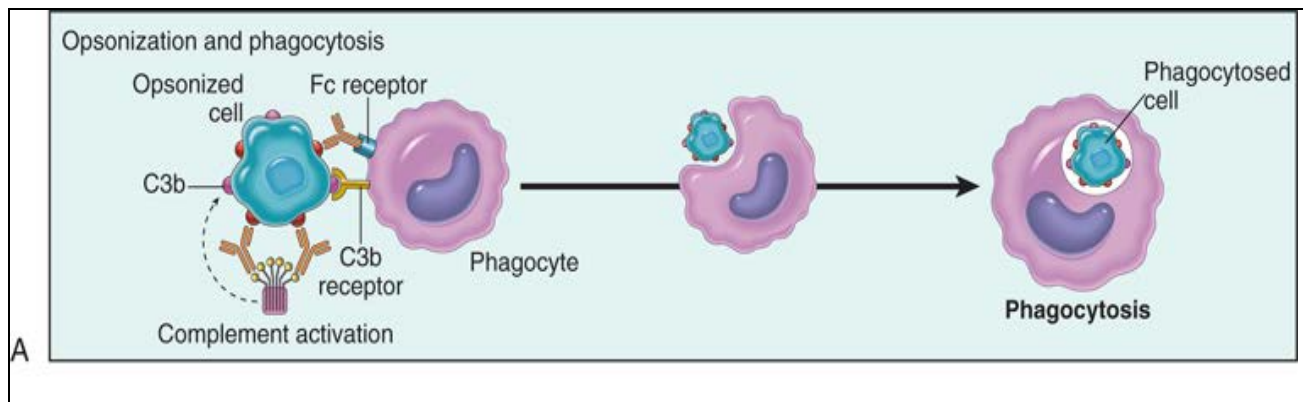


Phases of Type I Hypersensitivity

Figure 4-9

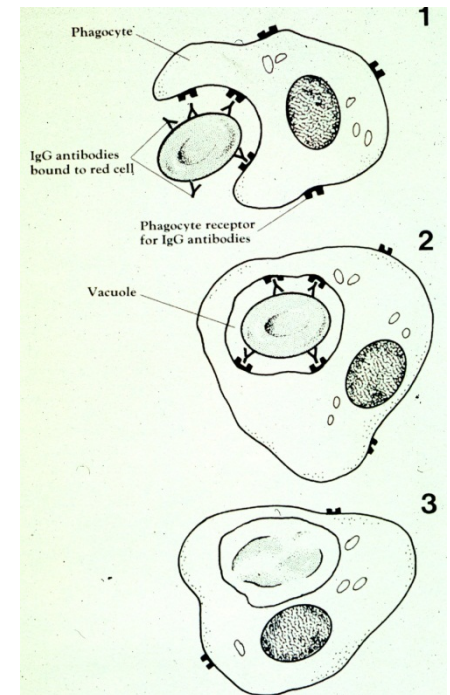


Type II A Hypersensitivity: Tissue Antigen as Target

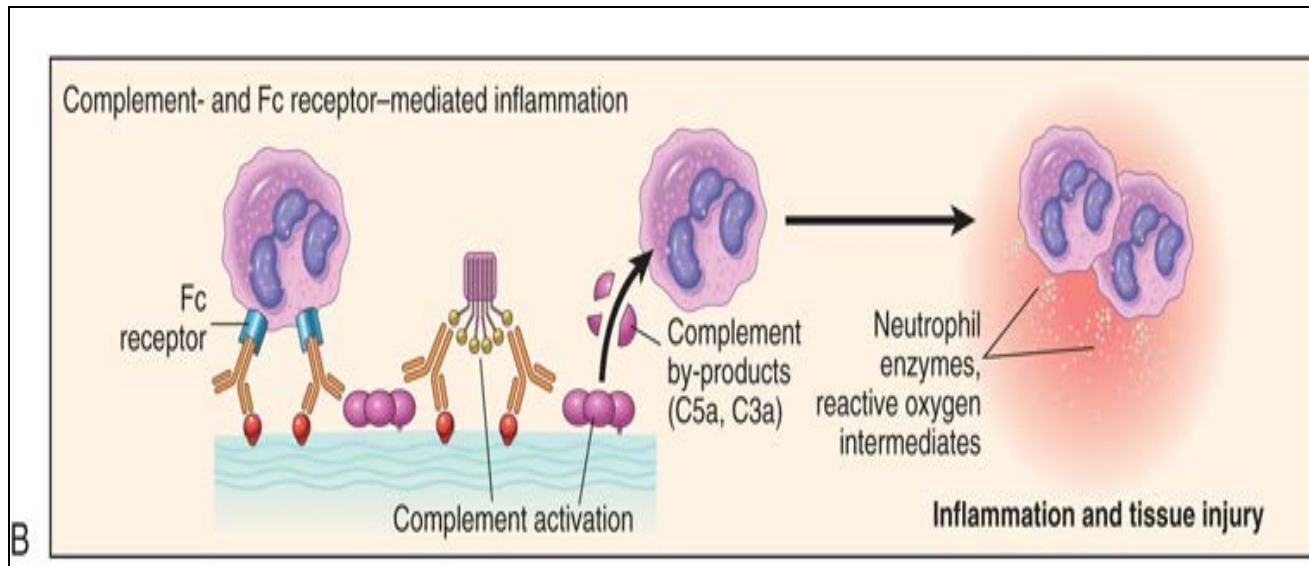


Opsonization and phagocytosis, Figure 4-10

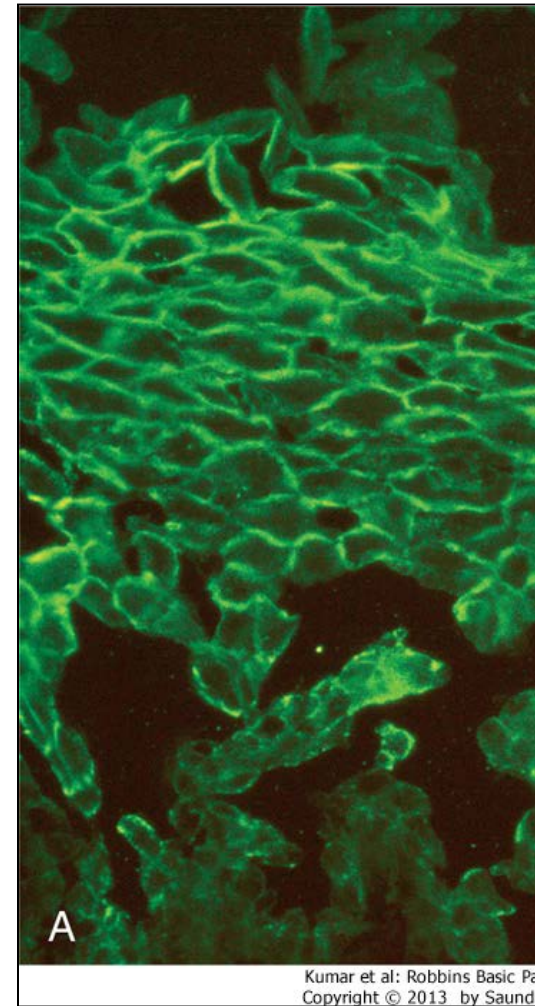
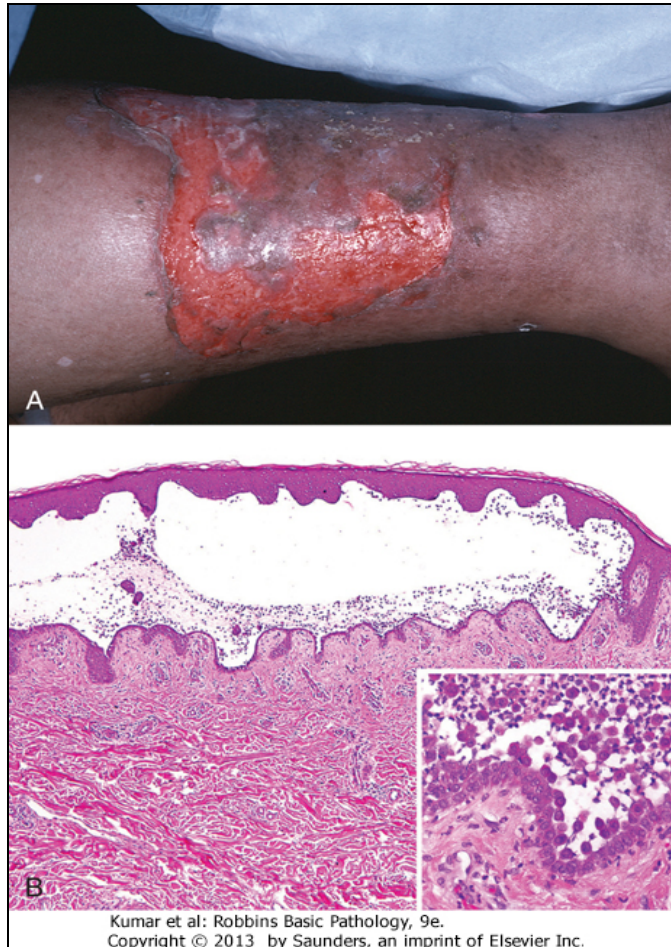
Autoimmune Hemolytic Anemia



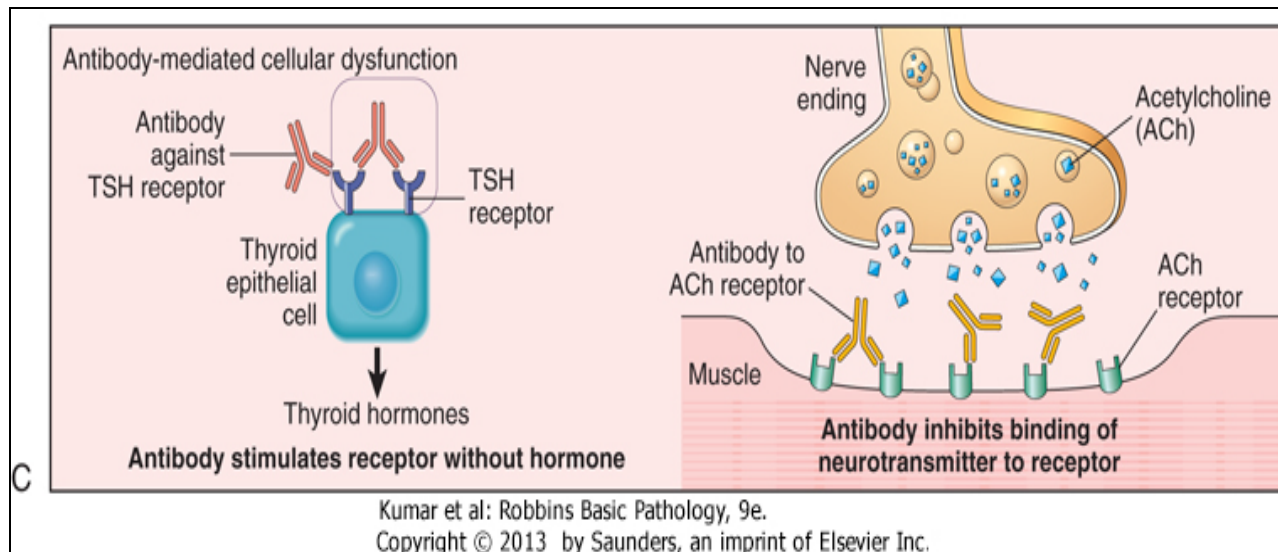
Complement/Fc receptor Type II B
Hypersensitivity
Figure 4-10



Hypersensitivity Type II B



Pemphigus vulgaris, Figures 23-9 and 23-10



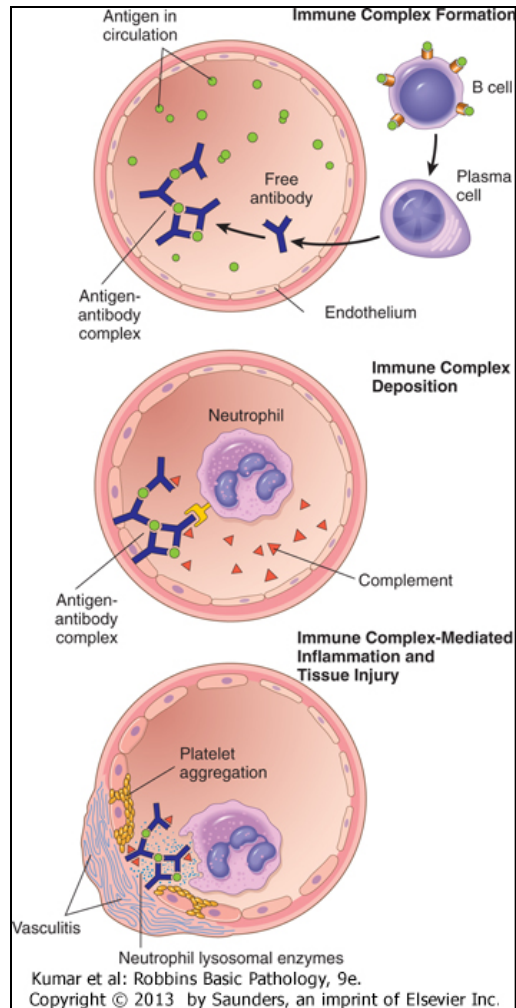
Antibody Mediated Type II C Hypersensitivity
Figure 4-10

Antibody-Mediated cellular dysfunction,
Hypersensitivity Type II C

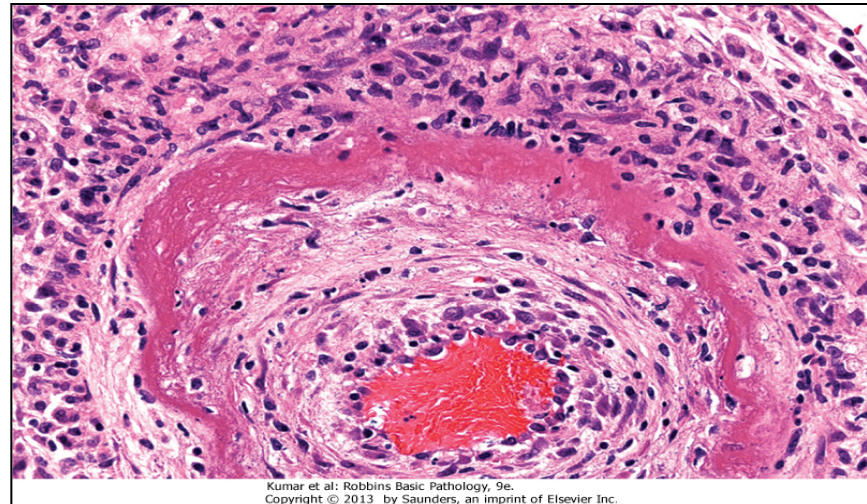


Myasthenia gravis

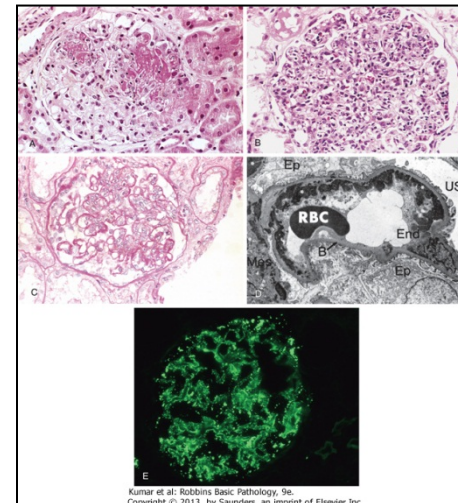
Graves disease



Type III Hypersensitivity, Fig 4-11



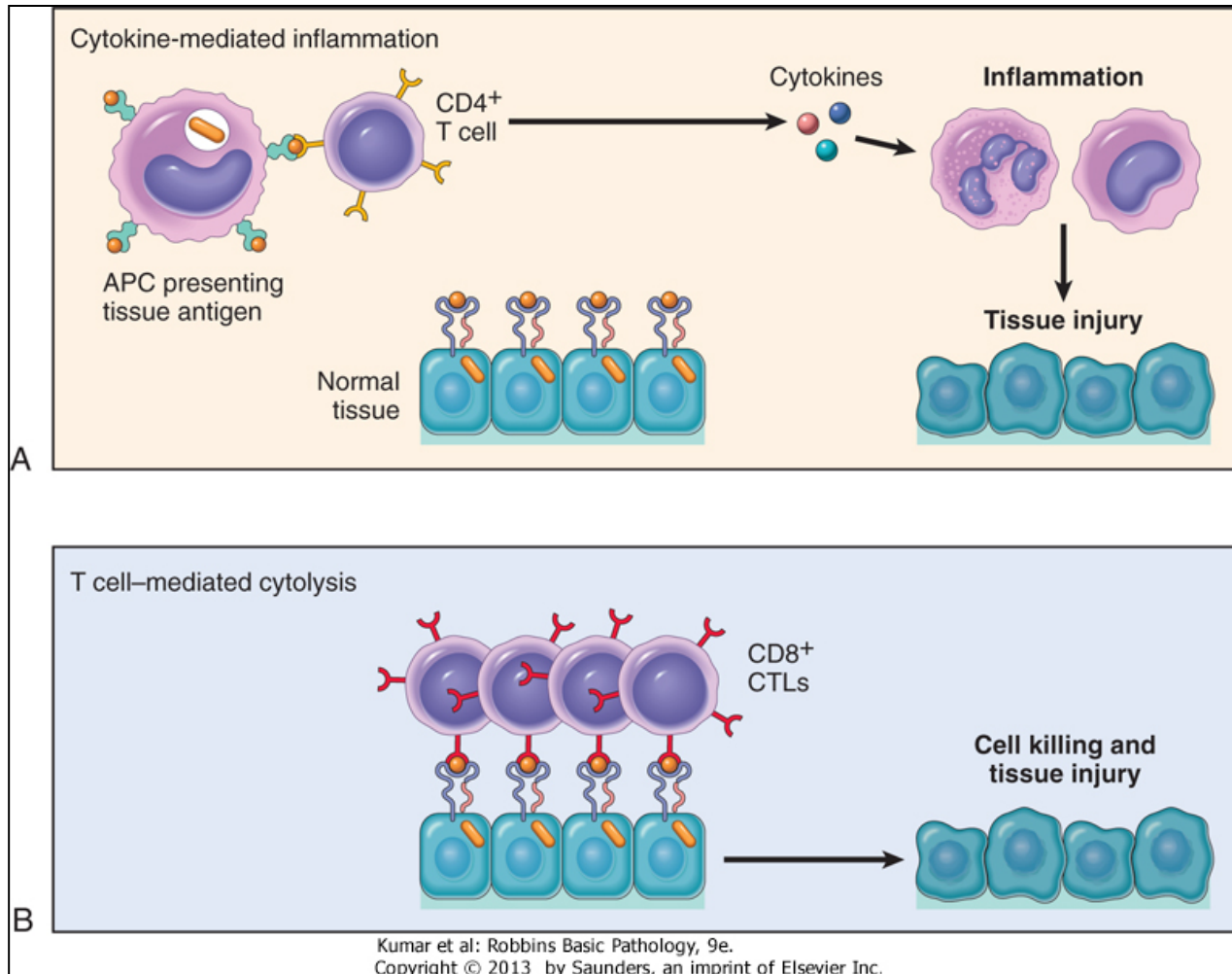
Polyarteritis nodosa, Fig 1-13



Lupus nephritis
immune complex deposition, Fig 4-18

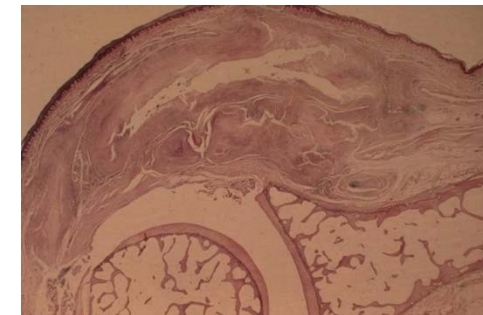
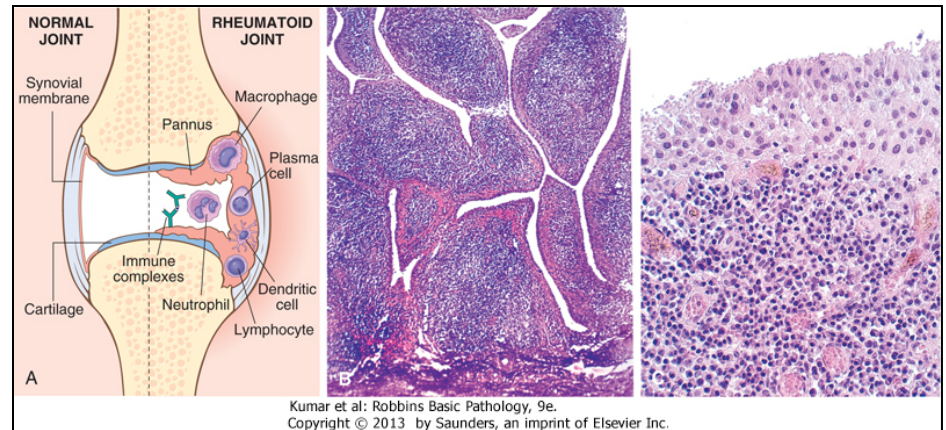
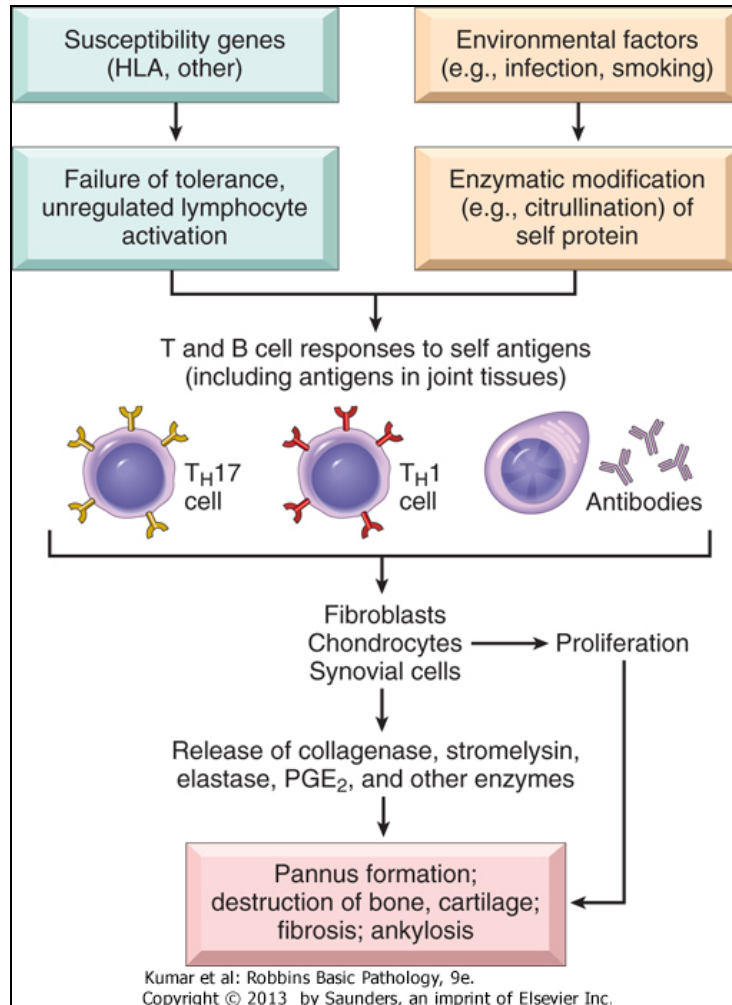
Type IV Hypersensitivity, T-Cell Mediated

Figure 4-12



Rheumatoid arthritis, a T-Cell mediated disease

Figures 20-19, 20-19



Poison Ivy, a T-Cell mediated disease



Granulomatous
inflammation,
Figure 4-14

